

2017

DAuto Newsletter

APRIL EDITION



Design engineers turn designs into reality. Without them, a great idea but nothing more than, well, a great idea.

MG IS BACK: THE E-MOTION CONCEPT

Premiered at the Shanghai Show, the MG E-Motion Concept is a study of a four seater electric sports car that builds on the brand's heritage and targets a young audience.



The E-Motion Concept features a slender sports back-style design that pays tribute to the brand's heritage, while at the same time adopting and mixing styling elements from different sources including other premium British marques, reinterpreted in a more compact package. The interior successfully blends modern lines, advanced connectivity and large touch-sensitive surfaces aimed at appealing to the younger generation, with a sense of luxury and craftsmanship conveyed by the extensive use of leather.



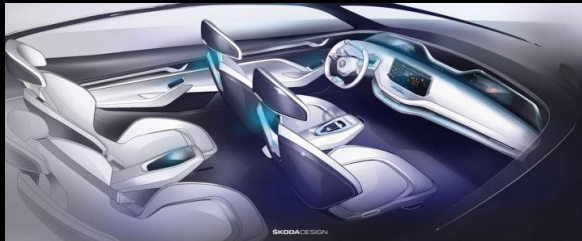
The result is a nice-looking sports car with many refined details including a pair of large butterfly doors that allow easy access to the 2+2 cabin.

The concept is based on a pure-electric modular architecture platform developed in-house by SAIC. Performance figures include a 0-100 km/h sprint in less than four seconds and a range of more than 500 km. According to the first available information, MG is seriously considering a production version of the E-Motion, and the positive reaction gathered at the Shanghai Show could represent a valid reason for turning the concept into a reality.

SKODA PREVIEWS VISION E CONCEPT INTERIOR AHEAD OF SHANGHAI DEBUT

Skoda has published a set of sketch renders that preview the interior of the Vision E Concept, with a futuristic, bright design.

The seats are slightly elevated, and so ensure a good view. They can also be rotated by 20 degrees. When the doors are opened, the seats swing outwards, making getting in and out easier. After the counter-opening doors have been electrically closed, the seats return to their original position. The concept vehicle introduces this new 'Simply Clever' idea that provides additional comfort thanks to its ergonomically optimized design and mechanics. A particularly generous sense of space is created, as the Skoda Vision E does not require a middle tunnel either in the front or rear.



In the bright interior, four rotatable single seats and the missing central tunnel ensure a generous sense of space.

Thanks to the large glass surfaces, the interior of the Vision E is bright and transparent. The continuation of the horizontal lines emphasizes the clear structure and spaciousness of the interior. Four shell-shaped individual seats with innovative backrests emphasize the modernity. With a long wheelbase and short overhangs at the front and rear, the designers have created spacious and comfortable interior dimensions in the Vision E.



SKODA PREVIEWS VISION E CONCEPT INTERIOR AHEAD OF SHANGHAI DEBUT

In addition to the cockpit screen, on which the classic vehicle data is displayed, the Skoda Vision E features additional screens for passengers. The center of the dashboard houses the central touch-screen display, on which the driver and front passenger can read and operate all the important functions and services of Skoda Connect. Each passenger has their own screen that can be used for numerous comfort functions such as information and entertainment. The front passenger's monitor is located in the instrument panel, and the screens for the passengers in the rear are built into the backrests of the front seats. In addition, passengers can personalize their entertainment programme via their own touch displays. The control element for the front passenger is located in their right armrest; the passengers in the rear have theirs in the between the two individual seats.

There is an integrated phone box located in the inside of each door, with which smartphones can be inductively charged; personal settings, data and information on the smartphone can be accessed via the individual passenger's display. Ambient lighting, which can be programmed in ten colors, is integrated into the decor strips in the doors and below the dashboard. Under the large rear door, there is a large trunk. The front seats can be reclined and the steering wheel raised to provide maximum space utilization and comfort.



NEW CITROEN C5 AIRCROSS: THE DESIGN

At the Shanghai Motor Show Citroën has revealed the C5 Aircross, a global model directly inspired by the 2015 Aircross Concept with a bold, consistent design and new suspension technology.

As with all its recent models, the C5 Aircross showcases a **very consistent, bold design** which makes a statement about the brand identity.



This, combined with a balanced mix of clean, smooth surfaces and boldly defined features, allows the design to stand out from other companies following today's styling trends.



The car's look is characterized by the high hood line, the 2.73m wheelbase coupled with short overhangs, and the strong graphic features, with rounded rectangular and trapezoid shapes used throughout the exterior and the interior.

The same design languages used for the exterior is also adopted in the cabin, which features welcoming seats, a wide and tall central console, and soft and warm materials that enhance the feeling of protection and comfort.

SSANGYONG TEASES FLAGSHIP SUV

At the Seoul Motor Show SsangYong is unveiling a full-size SUV with a design that evolves the lines first introduced with the LIV-2 concept.

The new car – codenamed Y400 – embodies the qualities of dynamics and robustness already seen in the LIV-2 concept shown at the 2016 Paris motor show.

The SUV will be equipped with a rear- and all-drive transmission, and offer good all-terrain and towing capabilities. It will go on sale in Korea during the first half of this year, and internationally before the end of 2017.

The Y400 is 4,850mm long, 1,920mm wide, 1,800mm high, and has a 2,865mm wheelbase. It is based on the Quad-Frame body structure, which makes use of 1.5Gpa giga-steel – and industry first. The SUV also features 63% advanced high strength steel (AHSS).



PININFARINA AND HK PRESENT TWO ELECTRIC SUV CONCEPTS

At the Shanghai Motor Show Hybrid Kinetic Group has unveiled two new electric concept cars that join the H600 luxury sedan.

The five seater SUV K550 and the seven seater SUV K750 that make their debut at the Shanghai Auto Show follow the first model from the Hybrid Kinetic Group, the H600 luxury sedan presented in Geneva.

The three HK cars are all equipped with micro-turbine generator range extenders and high-energy and high-density super batteries developed in-house by HK.

The long lifespan of range extenders, batteries and motors allows them to be recycled and reused. This lowers cost and reduces waste and environment impact, which is in line with Hybrid Kinetic Group's environment principles.

All three models have been developed by Pininfarina, that has recently signed a 46 months agreement, worth about 65 Million €, for supporting the Hybrid Kinetic Group in the development of electric cars from the styling concept up to the engineering development and virtual and physical validation for series production. Compared with conventional new energy vehicles, HK claims an energy recovery rate over 30%, and a range of over 1,000 kilometers. The expected lifespan is 50,000 hours and maintenance is only required every 10,000 hours; the super batteries have a life span of 50,000 DOD charging cycles.



MERCEDES-BENZ CONCEPT A SEDAN

At the Shanghai Motor Show Mercedes-Benz has unveiled the Concept A Sedan, a design study that previews the upcoming compact model and the brand's new design direction.

Measuring 4.57 meters in length, 1.87 meters in width and 1.46 meters in height, the Concept A Sedan showcases a dynamic, three-box body style characterized by short overhangs and a slim greenhouse offset towards the rear.

The muscular wheel arch design featuring a reduced arch dimension emphasizes the 20-inch wheels – their size underlines the car's dynamism, but also reveals the relatively compact dimensions.

The surface treatment demonstrates the principles introduced with the recent Aesthetics A Sculpture, and compared to the current line-up adopts cleaner shapes while maintaining the sculptural look.

The light alloy wheels feature a technical/sporty look that features a structured surface between the spokes. The door handles of the show car are flush with the body, while the outside mirrors, are positioned on the Concept A Sedan's beltlines.



MERCEDES-BENZ CONCEPT A SEDAN

The front end expresses self-confidence through the deep Pan Americana grille tilted towards the front, featuring vertical chrome inserts and a star in the center, as well as the stretched hood with power domes. The large, lower air inlet features a diamond grid structure and a striking trim strip in dark chrome.

In line with the evolved design philosophy, the lines and gaps at the rear have been reduced. As a contrast to the paintwork, the rear bumper features a diffuser-look lower part trimmed in black with a chrome strip that emphasizes the car's width, while the integrated exhaust deflectors are finished in dark chrome.

The unique headlamps adopts a grid structure that represents a counter pole to the exterior ("stimulating contrast" is one of the six guiding principles of Mercedes-Benz design).

The grid structure in the lamps has been coated with a UV paint and it is exposed to ultraviolet light. As a result, the headlamps "glow" in different colors, depending on the light medium – the daytime running lamps, for instance, are white.

This unique lighting technology is also used at the rear: the tail lamps have been designed as structural sculptures.



JAGUAR ANNOUNCES LIMITED SERIES E-TYPE REBORN

Jaguar Classic has announced the upcoming launch of 10 comprehensively restored Series 1 E-types, direct from a purpose-built facility in Coventry.

With the E-Type Reborn Jaguar Classic is offering prospective customers a unique opportunity to purchase an original and highly collectible E-type direct from the vehicle's original manufacturer.

The launch of E-type Reborn is a first for Jaguar and extends the successful initiative previously introduced for Land Rover's Series I and Range Rover Classic models, which will also be on show at Essen.

The first E-type Reborn, a 1965 Series 1 Fixed Head Coupe 4.2, is making its world debut at Techno Classica Essen show in Germany on 5-9 April 2017.

As much of the original vehicle as possible is retained or refurbished to correct specifications, while any safety-critical parts are replaced with new items from Jaguar Classic Parts.



JAGUAR ANNOUNCES LIMITED SERIES E-TYPE REBORN

Body panels from Jaguar Classic's reverse-engineered panel programme are fitted where necessary, to remove corrosion and restore the E-type's iconic looks with the best fit possible. The E-type Reborn team's meticulous attention to detail even extends to recreating the correct type of spot-welding when refitting those panels. A number of upgrades from later E-types can be incorporated into the restoration process at extra cost, subject to the customer's wishes, including improved cooling (using Lightweight E-type-derived parts), all-synchromesh gearbox (if not fitted to the vehicle originally), or Series 2 front brake calipers. Prices for E-type Reborn restorations from Jaguar Classic are dependent on specification, starting from £285,000.



Tim Hannig, Director, Jaguar Land Rover Classic, said: *"The E-type is the most iconic sports car of all time, so we are delighted to be able to give new life to expertly selected examples for discerning customers around the world to own and enjoy."*

"The resources and information available to Jaguar Classic's expert technicians are unrivalled, which results in the most authentic E-type restorations possible."

The first vehicle to go through the complete E-type Reborn process is an Opalescent Gunmetal Grey Series 1 4.2 Fixed Head Coupe. Originally exported to California in May 1965, the car recorded 78,000 miles before being stored in 1983. It retains its original matching numbers body shell, engine and gearbox, all of which have been completely rebuilt by Jaguar Classic technicians.

HONDA VULTUS CONCEPT BIKE TO BE FEATURED IN “GHOST IN THE SHELL”

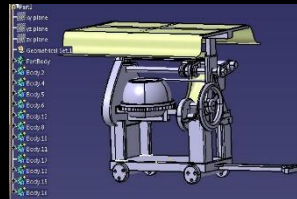
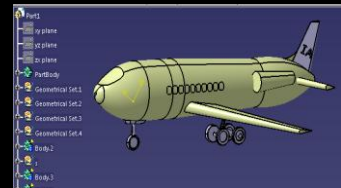
The Honda Vultus/NM4 scooter/bike hybrid will be featured in the upcoming sci-fi movie “Ghost in the Shell” from the iconic Japanese franchise.

This will be one of the few rare cases where a production vehicle featured in a sci-fi movie won't look out of place: the bold bike was presented by Honda in 2014 and was followed by the production NM4 model, with a design very close to the original study.

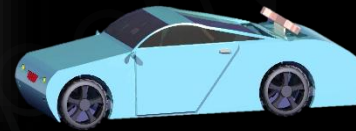
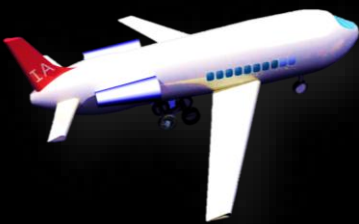
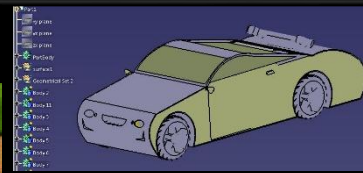
The low stance and the seating position of the vehicle also remind of another iconic sci-fi scooter: the iconic red motorcycle from the other sci-fi manga Akira.



STUDENT'S CORNER



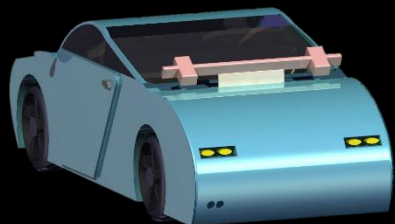
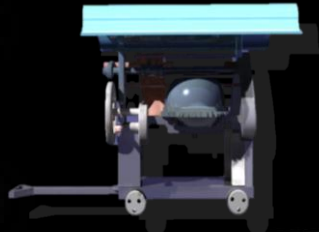
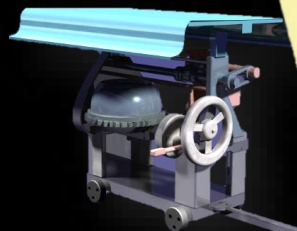
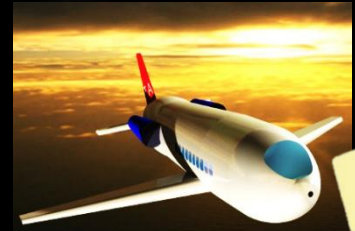
DAuto Training Yield



By :
Parag Parihar
Mandsaur institute
of Technology,
(MANDSAUR)
Design Tool :
CATIA V5

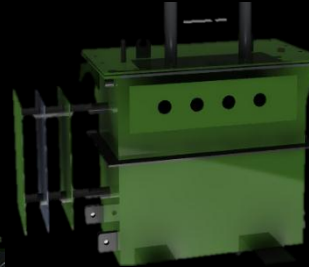
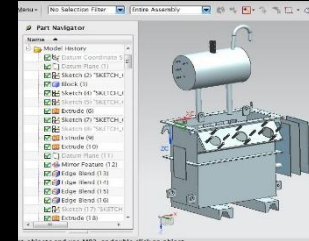
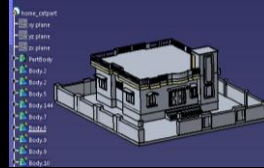
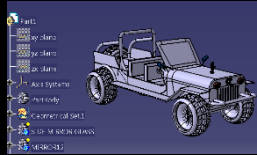
By :
Nitesh Kumar
TIT Advanced
(BHOPAL)
Design Tool :
CATIA V5

By :
Vivek Tiwari
BIRTS
(Bhopal)
Design Tool :
CATIA V5



STUDENT'S CORNER

DAuto Training Yield

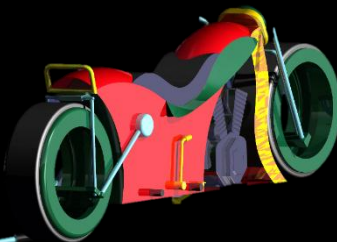
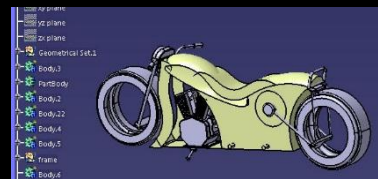


By :
Ritesh Kumar
OIST, (JABALPUR)
Design Tool :
CATIA V5

By :
Harender Kumar Yadav
(RITS)
BHOPAL
Design Tool :
CATIA V5

By :
Deepak Paudel
TIT-EX,
(BHOPAL)
Design Tool :
U.G.

STUDENT'S CORNER



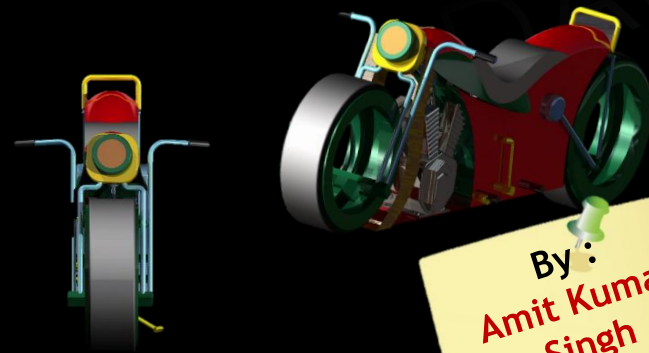
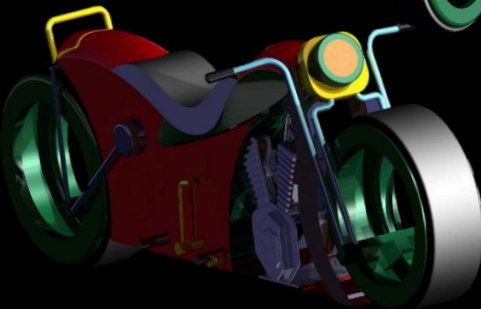
By :
Rohit Namdev
SVP, (INDORE)
Design Tool :
CATIA V5



DAuto Training Yield



By :
Rituraj Singh
RKDF College of
Engg. (BHOPAL)
Design Tool :
CATIA V5



By :
Amit Kumar Singh
ASCE, (Bhopal)
Design Tool :
CATIA V5



More info about training:

Toll Free # 18001234011

E-mail : training@dauto.co.in

**CONNECT
THROUGH**



visit us at www.dauto.co.in

Thanks for reading..