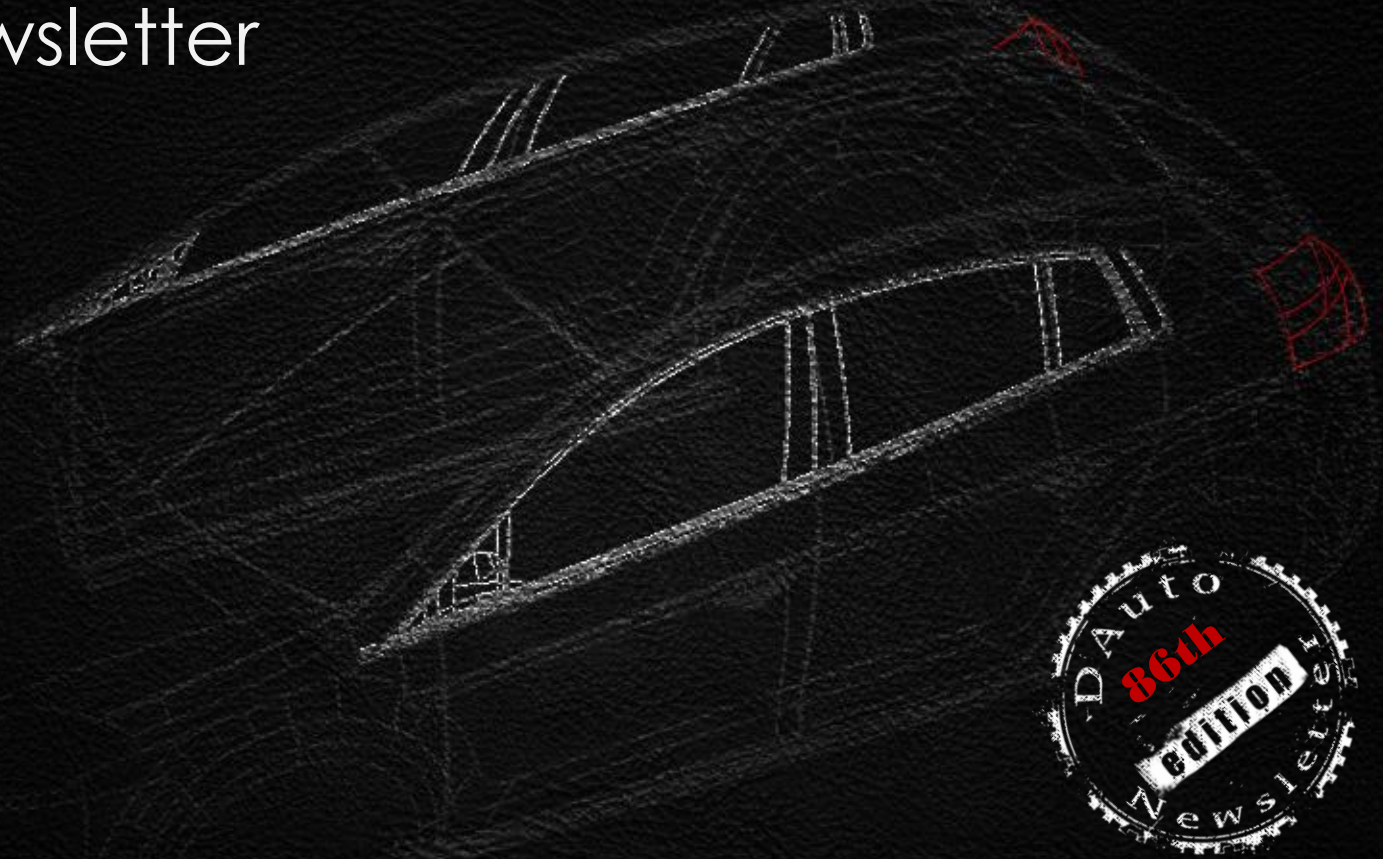


2016

DAuto Newsletter

OCTOBER EDITION



Design engineers turn designs into reality. Without them, a great idea but nothing more than, ... well, a great idea.

VOLKSWAGEN I.D. CONCEPT PREVIEW ELECTRIC MODEL FOR 2020

At the 2016 Paris Motor Show Volkswagen has unveiled the I.D. Concept, an electric vehicle that anticipates a 2020 production model and with a fully autonomous driving mode for 2025.

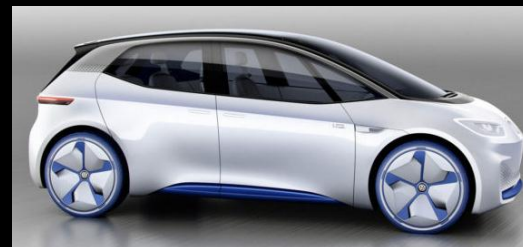
According to the German carmaker, the I.D. will be the first in a new generation of innovative electric vehicles, that will be launched starting from 2020.

The electric motor is positioned on the rear axle, while the high-voltage battery pack is integrated in the floor. The wheelbase is 2,750 mm long, and is combined with minimal overhangs.

The vehicle architecture – called Modular Electric Drive Kit (MEB) – was developed from scratch and is specific for an all-electric drivetrain.

Volkswagen also developed a new design DNA, which aims at making the I.D. instantly recognizable as a zero-emission vehicle.

This layout allowed to implement the so-called Open Space Concept, offering an interior space comparable to that of a Passat while keeping the exterior dimensions in line with a C-segment car- the I.D. is 155mm shorter than the current Golf.



VOLKSWAGEN I.D. CONCEPT PREVIEWS ELECTRIC MODEL FOR 2020



The front end has no grille, so the identity is conveyed mostly through the design of the headlights, which feature interactive LED elements with a C-shaped light signature.

There are no B-pillars: instead, the front and rear doors form a protective unit when closed. The rear doors open backwards with a swivel mechanism.



Additional technical highlights include a very high front wheel steering angle and with a turning circle of just 9.9 m;

Volkswagen has announced its plans for launching the fully autonomous version of the I.D. by 2025. The car will be equipped with the "I.D. Pilot" mode. The "I.D. Pilot" is activated by touching the VW logo on the steering wheel, which also makes the electrically adjustable and retractable steering wheel disappear into the dashpad to form a single entity flush with the dashboard, thus offering a true lounge feeling.

The I.D. is powered by a 125 kW / 170 PS electric motor that allows a range . I.D. is driven by an electric motor with an output of 125 kW and has a range between 400 and 600 km on a single battery charge. The motor is integrated with the multi-link rear axle and combined with a decoupled subframe; this axle layout improves driving dynamics and acoustics.

HONDA TO DOUBLE NAVI PRODUCTION

The “mini-bike” has received a good sales response after its launch, thus egging Honda on with plans to expand its reach to other cities too

Honda Motorcycle and Scooter India (HMSI) unveiled the Navi at the 2016 Delhi Auto Expo earlier this year. Launched with a price tag of Rs 39,500 (ex-showroom, Delhi) the Navi received a huge sales response in the Indian market. HMSI managed to sell around 10,000 units within a few months of the launch and now, in order to meet the growing demand, the Japanese bikemaker has plans to double the production of the “mini-bike” to around 1 lakh units soon.

Honda is currently selling the Navi in just 10 cities across India, but now, seeing the growing demand for the scooter, the company is planning to expand its reach to other cities by the end of this year.

Yadvinder Singh Guleria, Senior Vice-President, stated: "We have been really surprised by the humongous response to the Navi. It's really exceeded our expectations. We have, therefore, decided to almost double our capacity to 90,000 to 1 lakh units soon."



The mini bike is powered by the same tried and tested 110cc four-stroke engine which also powers the Activa, and is capable of producing 8PS of power and 9Nm of peak torque. The motor is coupled with a variomatic gearbox. The fuel tank capacity is 3.8 litres and it returns a fuel efficiency figure of 60kmpl, as claimed by Honda. It features telescopic forks at the front and a mono-shock at the rear.

TATA MOTORS AIMS TO BECOME THIRD-LARGEST CARMAKER IN INDIA BY 2020



The auto industry in India is currently dominated by Maruti Suzuki India Ltd., which recently achieved a whopping 49 per cent market share. The Japanese car firm is followed by South Korean auto major Hyundai Motor Company, which entered India in 1996 and has since strengthened its place as one of the most reliable car marques in India.

The home-grown auto major currently caters to only 60 per cent of the passenger vehicle segment in India. On the other hand, Tata Motors, which has been in the automotive business for much longer in India, has never managed to make its mark in the passenger vehicle sector. Over the years, the home-grown carmaker has sold good numbers, but only managed to cater to the cab service providers across the country. Now, though, Tata Motors has set itself the target of becoming the third-largest passenger vehicle manufacturer by 2020.

To achieve this feat, the Indian automaker is lining up a range of products for the domestic market, which will help in pushing it from the fifth position (in terms of volume, at present) to the third position. Currently, Tata Motors is catering only to 60 per cent of the passenger vehicle segments available in the market. The company doesn't have products in various segments, such as compact SUV, executive sedan and premium hatchback segments. Put together, these three segments can help Tata Motors to clock considerably higher sales numbers, which could potentially help them achieve the 2020 goal.

TATA MOTORS AIMS TO BECOME THIRD-LARGEST CARMAKER IN INDIA BY 2020

While expanding the model range to feed all car segments is part of the strategy, the home-grown auto major also plans to cut costs by reducing the number platforms on which the cars will be built.

While the company is working hard to address the quality-related issues that have plagued its products, Pareek shared that the company is also trying to strengthen its service network across the country.

Tata Motors launched its Tiago hatchback earlier this year and it has received an overwhelming response. It is the first car to be crafted on Tata Motor's new design philosophy – Impact design. The Hexa crossover, which is slated to launch in January 2017, will be the company's second product carved out of the same design philosophy.

Mayank Pareek, president, passenger vehicles business unit, Tata Motors, said, "We have finalised our product plan for the next five years. Today, Tata Motors covers less than 60 per cent of the total market and one of the things on which we focused during the product strategy is to increase our footprint in 100 per cent of the market.



The 40 per cent space that we are not in constitutes some of the very obvious segments. We are not there, for example, in the premium hatchback segment. So that's one obvious wide space for us. Similarly, in the executive sedan segment and compact SUVs we are not there."

2017 PAGANI HUAYRA DINASTIA STUNS IN CHINA, ONE OF THE FINEST PAGANI VEHICLES EVER

Pagani is not a company that usually is in the headline because it does not often release updates and new cars. However, it has been on the news nowadays as just last week it got the best lap time at the Nurburgring with the Huayra BC. And today, the arrival of the 2017 Pagani Huayra Dinastia surprises fans in China with its stunning purple and turquoise blend.

The fourth Pagani Huayra Dinastia is very striking, not only because of its color (the other three have traditional colors: gold red, blue and black) but also because of its more upscale look, according to MotorAuthority.

The Pagani Huayra Dinastia is one of the most striking vehicles created by the Italian firm. When the car model was announced, the company said there will only be three units and will only be available in the Chinese market. Now it seems that Pagani has added a fourth.

The exterior of this unit is amazing. The main color used for the body is purple, which is unusual in a car let alone in a vehicle of this performance and luxury.

The purple receives a contrast in some details of the body, a turquoise blue with black Alcantara and numerous carbon fiber parts.



2017 PAGANI HUAYRA DINASTIA STUNS IN CHINA, ONE OF THE FINEST PAGANI VEHICLES EVER

In addition, this unit has the Tempesta package that adds aerodynamic features including mounting of new wheels, a carbon front splitter, and rear diffuser as well as suspension adjustments to make it more effective in circuit and gold color wheels with 20 - inch front and 21 behind.

The engine of the Dinastia is the same as what was used in the plain Pagani Huayra, a V12 Biturbo with 6 - liter AMG that can deliver an amazing 730 hp and 1,000 Nm torque performance. This makes the inside of the Dinastia, beautiful and powerful at the same time.



However, if the exterior is striking, be prepared to see inside. In much of the interior, it has been introduced the same turquoise playing on contrast aboard. This tone is in the seat upholstery, in the same center console and on the skin of the doors and small contours of the entire dashboard. The infotainment system is also updated with the latest tech functions adding luxury to the Pagani Huayra.



2018 TOYOTA SUPRA BEST LOOK YET REVEALED

While most people are expecting some new cars around 2017, here comes the 2018 Toyota Supra. This one will be a good entry in its class. Many predictions and theories come regarding this modern car. The new upcoming Supra will combine both the technologies made by BMW and Toyota. Perhaps this model is the after effect of the previous creation called 2016 Supra. There are many expectations for this new car. You can even review some rumors about the exterior, interior, drivetrain, and the price. Many fans of Supra lineup will be so much astonished by this car. You won't get disappointed by knowing some improvements made in the new Toyota Supra 2018.

The best method to inspect a quality of a car is based on the exterior. You can take a look at its basic platform as it uses the similar type to its predecessor. Perhaps it's quite similar with an old concept of LFA from Lexus. At the first glance, the car will be so forceful with intense appearance. At the front part, you can see 2 air admissions with carbon fiber fan in each section.



2018 TOYOTA SUPRA BEST LOOK YET REVEALED

The seats are made of calfskin in top grade quality. This will make sure your comfort while driving this car. The engine is quite good with a turbocharged feature. Thus, you can rely on its power and performance. Aside from the aspect of comfort, you can take advantage of its infotainment system. The car will be well-equipped with some features like an amazing audio system, nice safety systems, and many others. What about space? Well, this is one of the most wanted sports cars. It means you can't expect lots of space inside the cabin. The car also has the feature of good brake systems and adjustable suspension. Overall, 2018 Toyota Supra is what you need in the future.

What about the engine? Most experts make a prediction regarding a V6 engine as the base power of the *new Toyota Supra 2018*. The overall power will exceed all of its predecessors. This car will win the competition among the same class. You won't expect less than 260 up to 400 horsepower from this sports car. A good-looking car with an amazing engine is all that people want. This car won't make buyers disappointed as it produces lots of torque and speed. Plus, it's quite satisfying in the terms of acceleration too.



2017 CHEVY IMPALA

The **2017 Chevy Impala** is the car that can fit everyone and it has a spacious interior, the latest safety features with advanced phone integration. The car has been named as The Best Large Car for The money. There are few new features available with new Impala but main novelty is that there are no bi-fuel option that could run on both petrol and CNG (compressed natural gas). Main rivals of the *new Chevy Impala 2017* are Toyota Avalon, Ford Taurus, Dodge Charger, Kia Cadenza and Hyundai Azera.



The car has detailed contour at the outside and it gives the car the athletic stance that you will always have to notice. Inside of the car, there are the chrome touches with the wood grain accent. The car is enough for five adults and this means that you and the passenger will be riding in comfort. There are three models available: base LS, LT and top Premier. People will find 18-inch wheels on LS and LT models while Premier models runs on 19-inch wheels as standard and 20-inch comes only as an option. When it comes to exterior color base LS comes with four standard options: Black, Blue Velvet Metallic, Silver Ice Metallic and Summit White. Mid-range LT and top Premier models, beside these base colors, also include Mosaic Black Metallic and Peppercorn Metallic and two premium colors: Siren Red Tintcoat (+\$395) and Iridescent Pearl Tricoat (+995).

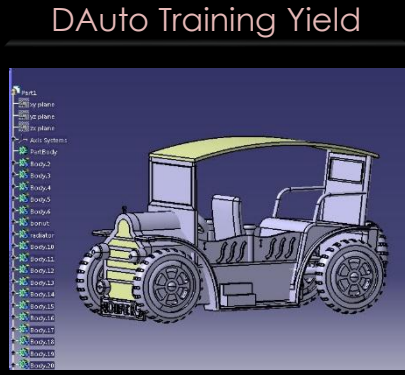
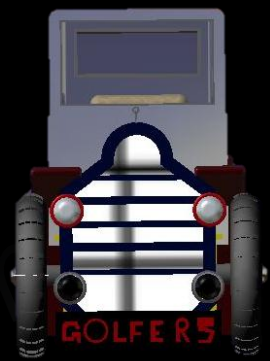
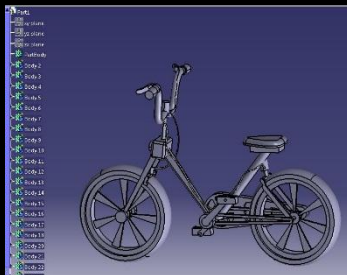
2017 CHEVY IMPALA

The 2017 Chevy Impala helps to stay connected to any entertainment you like with information that you want by the use of the 4G LTE wi-fi. It also supports the Chevrolet MyLink, a touch-screen display where you can be able to send and receive text messages and to play the music and others. The car is compatible to the Apple CarPlay and it is in the smart way so that you can listen to the Apple Music and to get the direction using Apple Maps or to call friends. The available safety features with the advanced technology will work together to ensure that to get the confidence at the sides, back and at the front. Besides, there are safety features such as the available forward collision alert and the available side blind zone alert. The car has got 5-star with NHTSA for the car in general when it comes to the safety.



With the performance of this car, you will be the owner of the highway, streets and any road you drive on. You can choose a powertrain options that deliver the impeccable balance for the aggressive performance with the intelligent efficiency. The base engine the new 2017 Impala 2.5-liter inline-4 engine which is capable of producing 196 horsepower and 186 lb-ft of torque. With its variable timing for its valve and direct injection it has EPA fuel economy rated at 22/30 mpg (city/hwy). The second optional engine is V-6 with 3.6-liter of displacement that supports start and stop technology. It delivers 305 horses and 264 lb-ft of torque and it has fuel economy rated at 18 mpg in city and 28 mpg on the highway. Both of these engines comes mated to Hydra-Matic 6-speed automatic transmission: 6T40 for 2.5L and 6T70 for 3.6L engine.

STUDENT'S CORNER



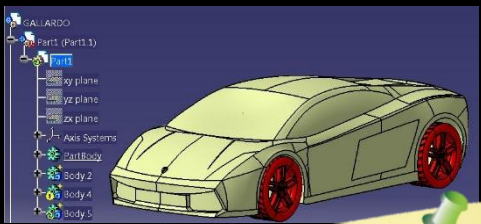
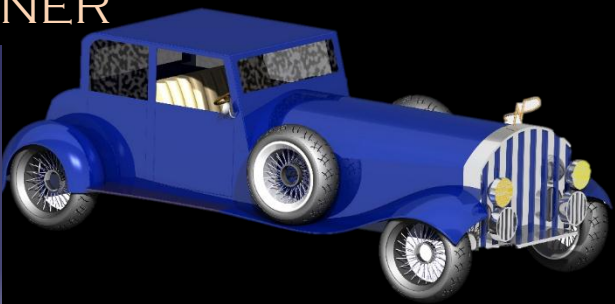
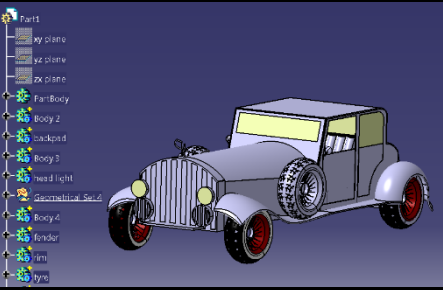
By :
Narendra Mahadik
I.E.S I.P.S
Academy (Indore)
Design Tool :
CATIA V5

By :
Narendra Mahadik
I.E.S I.P.S
Academy (Indore)
Design Tool :
CATIA V5



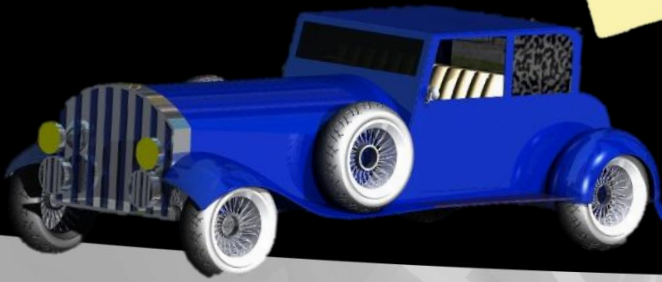
STUDENT'S CORNER

DAuto Training Yield



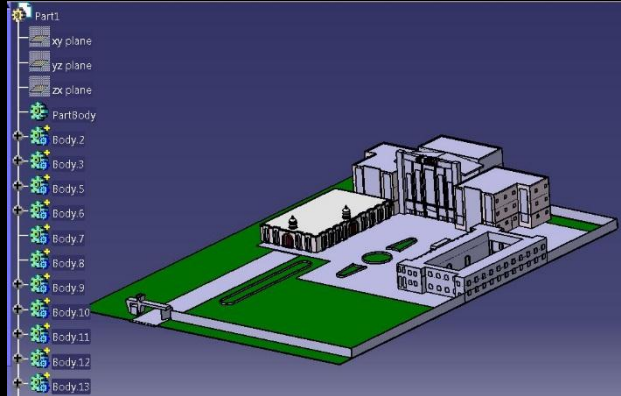
By :
Tushar
Jaiswal
LNCT (Bhopal)
Design Tool :
CATIA V5

By :
Nमित Purohit
SVCE (Indore)
Design Tool :
CATIA V5



STUDENT'S CORNER

DAuto Training Yield



By :
Abhishek Patel
GEC (Jabalpur)
Design Tool :
CATIA V5

More info about training:
Toll Free # 18001234011
E-mail : training@dauto.co.in



**CONNECT
THROUGH**



visit us at www.dauto.co.in

Thanks for reading..