

# 2017

## DAuto Newsletter

SEPTEMBER EDITION



Design engineers turn designs into reality. Without them, a great idea but nothing more than, .... well, a great idea.

## MCLAREN ULTIMATE VISION GT PUTS DRIVERS ON THEIR STOMACH

McLaren has revealed an extreme virtual racecar set to be featured on the PS4 Gran Turismo Sport. Among the features is the original “seating” position.

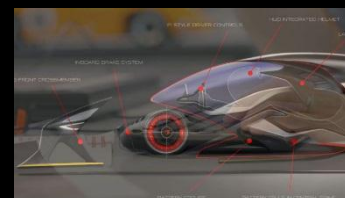
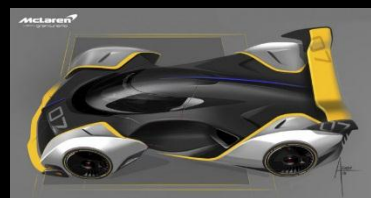
This new virtual study follows the Vision Gran Turismo project that between 2014 and 2015 involved many different carmakers and gave birth to a plethora of extreme concept cars.

Now the Ultimate Vision GT goes even beyond and offers an extreme design, extreme performances and even an extreme, prone driving position inspired by the motorcycles' world.

The pilot has only the head and arms covered by the canopy, with the torso and legs extending towards the back of the vehicle – and the pedalboard integrated in the engine bay.

Among the virtual technical highlights of the car – conceived for the year 2030 – are the carbon fiber construction and a hybrid powertrain delivering 1,150 hp.

The car will be available exclusively on the upcoming PlayStation 4 title, *Gran Turismo Sport*, which will be available starting October 17, 2017.





## MINI JOHN COOPER WORKS GP CONCEPT

Celebrating the 50th anniversary of the victory at the Monte Carlo Rally, at the 2017 Frankfurt Motor Show MINI is unveiling a racetrack-oriented concept with an extreme look.

The MINI John Cooper Works GP Concept embodies the “racing essence of a MINI” and follows the 2012 MINI John Cooper Works GP and 2006 MINI Cooper S with John Cooper Works GP Kit.

The exterior features a number of motorsport-focused enhancements, including the flared wheel arches, hood power dome with air scoop, carbon-fiber front apron, side skirts, air vents and air deflectors, 19-inch racing lightweight wheels.

The tail lights have an half-Union Jack motif on each side – a styling cue shared with the totally different MINI Electric Concept.

The John Cooper Works GP Concept is finished in Black Jack Anthracite exterior paint – which shimmers between grey and black – contrasted by Curbside Red metallic (a matt red shade) which visually accentuates the add-on parts.



## SMART VISION EQ FORTWO ENVISIONS THE FUTURE OF CAR SHARING

The autonomous concept vehicle by smart features an electric drivetrain, advanced connectivity and a futuristic design with pivoting doors.

While the proportions and dimensions (length/width/height: 2699/1720/1535 mm) of the concept are typically smart, the smart vision EQ for two is characterized by softer and rounder lines – a common aesthetic theme for autonomous vehicles.

This is coupled with a clear, future-oriented look achieved through the use of white metallic surfaces, dark-tinted glass surfaces and high-tech blue accents, contrasted by warm touches of rose gold that hint at the electric drive system.

A distinctive feature is the door opening system: the two doors pivot wing-like over the rear axle, which makes access easier and safer for cyclists and pedestrians.

The interior echoes the futuristic look of the exterior and features a minimalistic bench for two passengers, with a retractable armrest, and an essential display.



## KIA PROCEED CONCEPT: NEW IMAGES

Kia has revealed new images and design details on the Proceed Concept, the design study set to debut at the upcoming Frankfurt Show.

First previewed in the past days, the Proceed Concept evolves the brand's design DNA and gives indication on a possible high-performance, future addition to the ceed family.

Low, lean and lithe, the Proceed Concept's rakish roofline, muscular proportions and compact footprint hint at its outright agility. The silhouette of the car is complemented by a series of distinctive design cues.

Styling elements include a dynamic window frame that follows the roofline to the rear tailgate, while the striking 'Shark blade' in the bodywork, complete with GT logo, reinforces its lack of B-pillars.

Lateral strakes exaggerate the Proceed Concept's slim waistline and lend an air of muscularity to the rear of the car. It runs on six-spoke aluminum alloy wheels, 20 inches in diameter.

Where daytime running lights have become a key element in a car's identity, the Proceed Concept uses light in other ways. The concept features a 'Lumineline' – an illuminated outline of the car's glasshouse that greets drivers as they approach the car. This serves as a powerful nocturnal visual identifier for the Proceed Concept, highlighting its fastback shape.





## KIA PROCEED CONCEPT: NEW IMAGES

The concept's dramatic roofline flows into a tailgate characterized by its stacked air vents, and the rippled surface of a rear light strip inspired by molten ferromagnetic metal.

Among the Kia familiar design motifs are the 'tiger nose' grille, the sculpted 'island' hood inspired by the Stinger, the castellated windscreen, the full-length roof glazing, and the surface treatment featuring a mix of curved surfaces and taut creases.

The concept is finished in bespoke 'Lava Red' paintwork. This has been created by combining multiple hand-applied layers of black, chrome-effect silver, and red-tinted lacquer for a glossy, lustrous paint finish.

**Gregory Guillaume**, Chief Designer Europe for Kia Motors, commented: *"With many European drivers now seeking performance alternatives to the three-door hot hatch, we began thinking about a different halo model for the cee'd family. The Proceed Concept represents a bold new vision of how the vibrant soul of the procee'd could be reincarnated and revitalized for a new generation of performance-oriented drivers."*



## FUTURE-TYPE CONCEPT ENVISIONS THE JAGUAR OF 2040

Revealed by Jaguar, the Future-Type is a study of a premium vehicle for a shared mobility system featuring "Sayer", a detachable, AI-powered steering wheel that serves as a personal electronic device.

The Future-Type Concept has a Pod-like layout, with a single-box profile, detachable rear wheels and a cabin with a 2+1 seating layout. The vehicle is conceived for a premium, on-demand shared mobility service and integrates both autonomous and manual driving modes.

*It's part of our vision for As Jaguar Director of Design **Ian Callum** explains, the concept envisions "how a luxury car brand could continue to be desirable, in a more digital and autonomous age,"*

The exclusive interior combines premium material with a lounge-inspired layout featuring face-to-face seats.



The heart of the concept is Sayer – named after Malcolm Sayer, designer of the E-Type – a detachable AI steering wheel that serves as a personal device.

Sayer can be voice-activated for several tasks, including calling for the vehicle. Once integrated in the cockpit, it is the center of the HMI system.

The design of the steering wheel is characterized by a sleek shape with a sculpted surface treatment that echoes Jaguar Land Rover's product line-up.

## VOLKSWAGEN PREVIEWS UPDATED I.D. CROZZ CONCEPT

At the upcoming Frankfurt Show Volkswagen will be presenting a further developed version of the all-electric I.D. CROZZ.

The concept features a clean, dynamic design and, according to the company, gives clear indication on the design of the future production model, especially in the front end area. Styling elements include a wide hood, front wings contoured in large radii and a roof exterior finished in high-gloss black.

The I.D. Crozz Concept was first introduced by Volkswagen at Auto Shanghai 2017 in April.

The four-passenger interior is particularly spacious thanks to the position of the lithium-ion battery, which is integrated in the vehicle floor.





## MINI ELECTRIC CONCEPT

The Electric Concept is MINI's vision for the future of personal urban mobility and previews an all-electric series model planned for 2019.

The design MINI Electric Concept aims at conveying a sense of efficiency and advanced technology.

It features clear, clean-cut surfaces, which together with the texture contrast between matte and gloss elements, as well as the strong color contrasts created by the yellow and white-colored details gives the car a modern look, which appears somewhat inspired by modern electronic devices – a hint at the advanced underlying technology.

The surface cleanness and minimalism also aims at expressing the idea of efficiency.

Visual interest to the body is provided by the fiber-glass molded parts in the bottom area, which create an aerodynamic-oriented, technical design.

The playfulness of MINI design DNA is recalled – in addition to the yellow elements – by the tail lights, with a Union Jack-derived graphic design.

The silver and yellow color scheme is reminiscent of the earlier MINI E.

The wheel aerodynamic inlays are made using a 3D printing process and echo the fiberglass structure of the air deflectors

The grille is closed for aerodynamic efficiency. The front apron's simulated “air intakes” are sealed, yet they still include dark louvres that look like cooling fins and inject some added technical flair.



## FERRARI UNVEILS PORTOFINO GT

At the 2017 Frankfurt Motor Show Ferrari will present the Portofino, a V8 GT with a retractable hard top and a that will replace the California T.

The design of the new Portofino is characterized by the two-box fastback silhouette and a dynamic design developed in close collaboration with the aerodynamic department to ensure maximum efficiency.

Compared to Ferrari's most recent model – the 812 Superfast – the Portofino maintains the dynamism and sculptural look, particularly evident in the body flanks, but the result is more linear and less extreme, which contributes to the car's uncluttered look.

Named after the picturesque village and renown holiday resort, the Portofino is powered by a 600 hp V8 turbo and is equipped with a third generation electronic rear differential (E-Diff3).

Ferrari has chosen a particularly evocative moniker for this exceptionally versatile drop-top car, referencing one of Italy's most beautiful towns. Portofino is renowned for its charming tourist port and, over the years, has become internationally synonymous with elegance, sportiness and understated luxury. The launch color of the new Ferrari has also been dedicated to this marvelous town: Rosso Portofino.



## FERRARI UNVEILS PORTOFINO GT

Capable of unleashing a massive 600 cv and sprinting from 0 to 100 km/h in just 3.5 seconds, the Ferrari Portofino is the most powerful convertible to combine the advantages of a retractable hard top, a roomy boot and generous cockpit space plus two rear seats suitable for short trips.

The Ferrari Portofino's all-new chassis features a significant weight saving over the California T it replaces. Thanks to the extensive use of modern production technologies, all the chassis and body-in-white components have been redesigned with a consequent reduction in weight despite an increase in torsional rigidity.

The renowned Ferrari V8 turbo, part of the engine family that was nominated International Engine of the Year in both 2016 and 2017, now punches out 40 cv more than the California T's power unit thanks to the adoption of new components and specific calibration of the engine management software.

The characteristic Ferrari V8 soundtrack has also been further enhanced and can be fully appreciated, particularly in top-down driving.

All aspects of the 8-cylinder's efficiency have been honed with the adoption of new pistons and con-rods, and a new intake system design. The geometries throughout the exhaust system have also been revolutionized. The new one-piece-cast exhaust header reduces losses, an important factor in ensuring Ferrari's characteristic throttle response with zero turbo lag. These improvements, combined with the Variable Boost Management which adjusts torque delivery to suit the gear selected, enable the Ferrari Portofino to offer even higher levels of acceleration in all gears and lower fuel consumption compared to the outgoing model.



## CHERY PREVIEWS DESIGN DIRECTION WITH GLOBAL SUV SKETCHES

The all-new model will be unveiled at the 2017 Frankfurt Motor Show and will be the first of a line-up of global vehicles.

The design of the upcoming flagship model – codenamed M31T – fits in the ‘Life in Motion’ philosophy, developed by Chief Designer **James Hope**: it is inspired by nature and flowing water, and incorporates ‘hydrodynamic surfacing’ features.

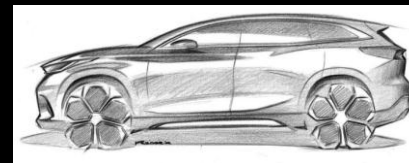
With the all-new model line, which will focus on SUV and crossovers, the brand is targeting young, urban customers.

The distinctive form of the all-new compact SUV flows from Chery’s progressive ‘Life in Motion’ design philosophy, developed by Chief Designer, James Hope. This evolution of Chery’s brand style is aimed at young, urban, forward-thinking customers who choose sophisticated, high quality products.



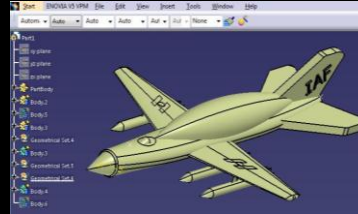
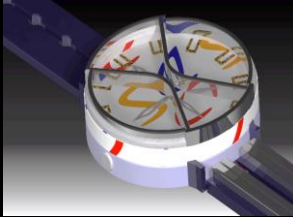
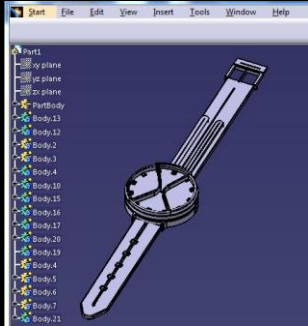
Many of the feature lines are inspired by nature and incorporate ‘hydrodynamic surfacing’ characteristics, which convey the pure, aesthetic quality of running water. The muscular and purposeful stance exudes confidence, with a sense of stability assured by the wide track and large, stylish wheels.

The progressive styling is also reflected in the car’s unique brand face. It features a sharp chrome horizontal brand bar, which is complemented by further chrome trim adorning the front bumper, side skirts and window surrounds. Full LED headlamps and a neat rear light cluster design complete the car’s dynamic aesthetic.



# STUDENT'S CORNER

DAuto Training Yield

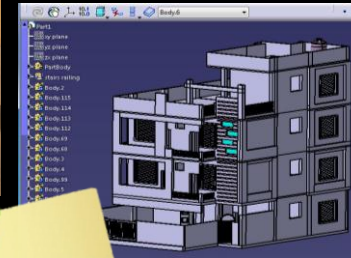


By :  
**Avani Chourey**  
(UIT, RGPV)  
BHOPAL  
Design Tool :  
**CATIA V5**



By :  
**Avinash Singh**  
I.E.S.  
(Bhopal)  
Design Tool :  
**CATIA V5**

By :  
**Lokesh Parmar**  
(SIRT-S)  
Design Tool :  
**CATIA V5**

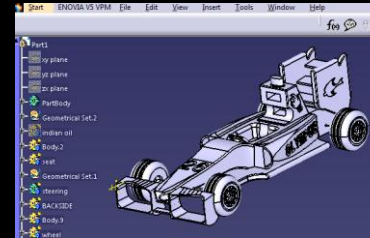




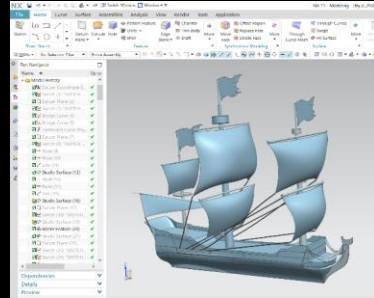
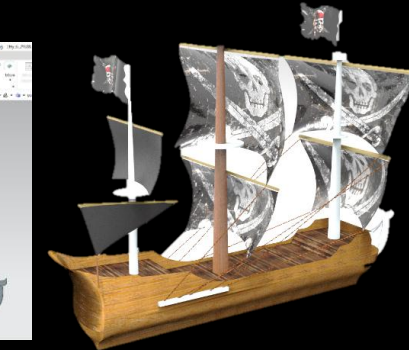
# STUDENT'S CORNER

DAuto Training Yield

By :  
**Gurpreet Khanuja**  
(UIT, RGPV)  
Design Tool :  
**CATIA V5**



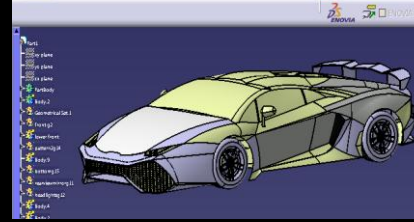
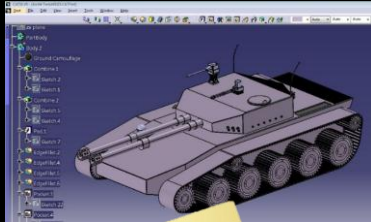
By :  
**Neeraj Kushwaha**  
(MGM CoET)  
**DELHI**  
Design Tool :  
**U.G.**





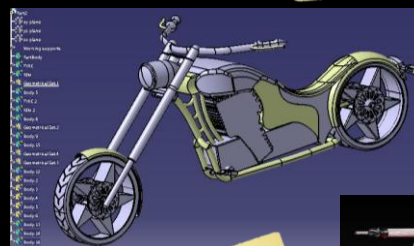
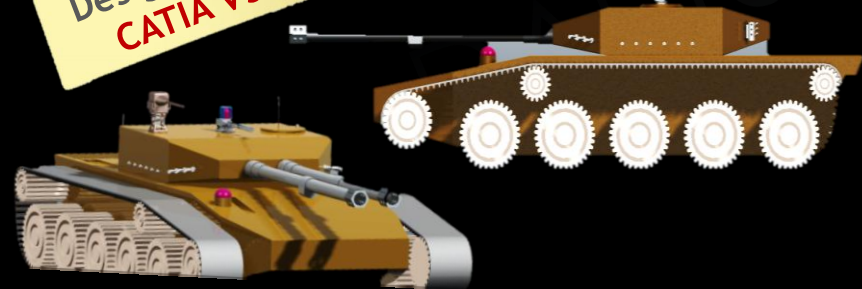
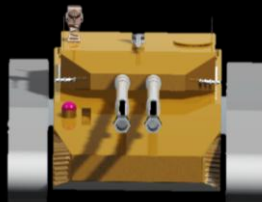
## STUDENT'S CORNER

DAuto Training Yield

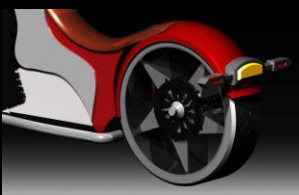


By :  
**Archit Ranjan Das**  
(TIT Advanced)  
Design Tool :  
**CATIA V5**

By :  
**Manthan Patel**  
(UIT, RGPV)  
Design Tool :  
**CATIA V5**



By :  
**S.M. SIKANDAR**  
(NRIIST)  
BHOPAL  
Design Tool :  
**CATIA V5**



More info about training:  
Toll Free # 18001234011  
E-mail : [training@dauto.co.in](mailto:training@dauto.co.in)

**CONNECT  
THROUGH**



visit us at [www.dauto.co.in](http://www.dauto.co.in)

Thanks for reading..