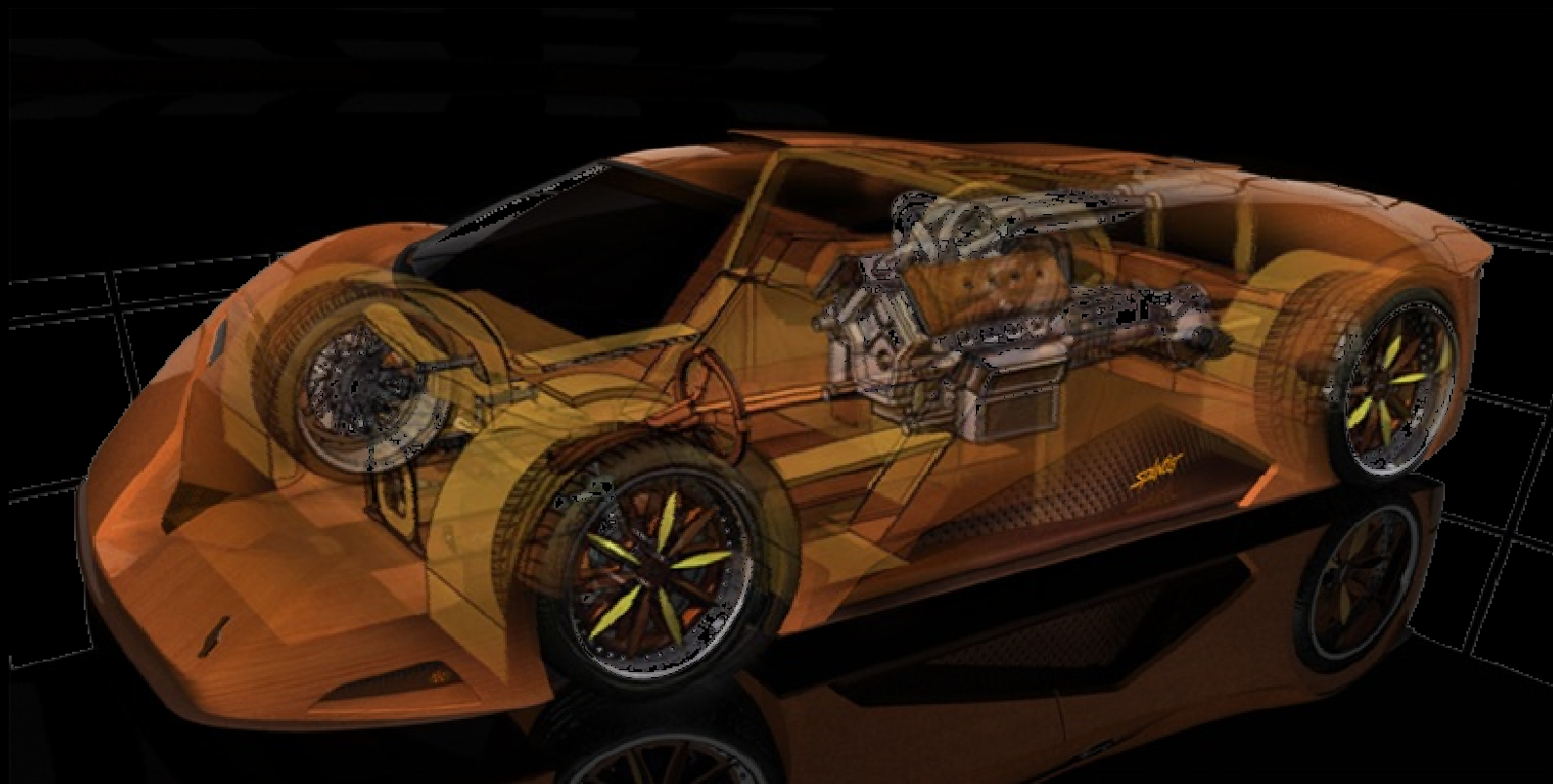


DAuto News Letter



Design engineers turn designs into reality. Without them, a great idea but nothing more than, well, a great idea.

The Evora: Lotus

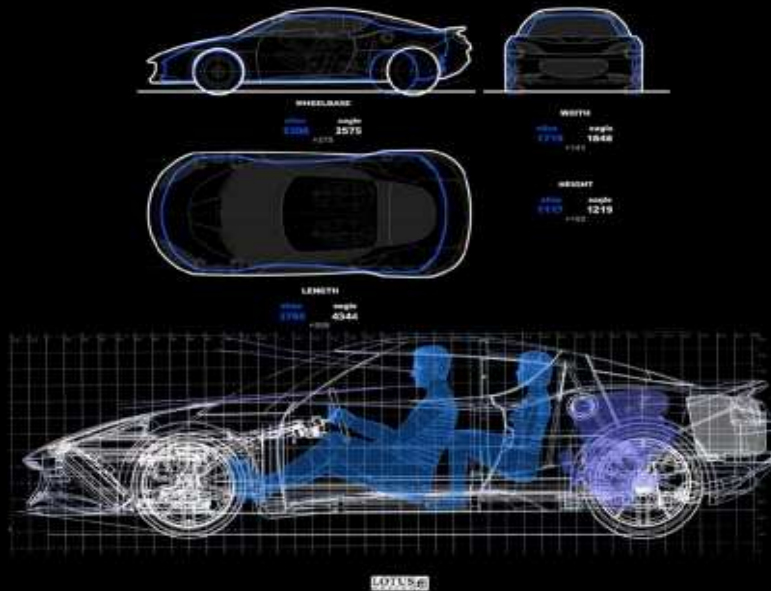


The Evora is the latest car from Lotus, a company known currently for small, fast racers. The cars handle so well is because the company has gone through so many twists and turns. This sort of candour seems to be the rule from one of the U.K.'s few remaining car companies. The 2010 Lotus Evora uses a unique extruded aluminium chassis, a centre tub with bolt-on front and rear pieces.

Along with its composite body panels, that structure keeps the total weight down to just over 3,000 pounds. It also results in a stiff body structure that ensures the Evora exhibits the same sort of handling prowess that marks the Lotus Elise and Exige. But where the Evora differs from Lotus' other models is in its cabin space. Because Lotus concentrates on building small, lightweight cars, its earlier models require the limberness of a yoga instructor to enter and exit. One of the guiding principles in the development of the Evora was that it should accommodate a 6-foot-5-inch driver. It was also designed for 2+2 seating, although the rear seat is actually an option.



Dimension Automotive Technology



The steering is every bit as tight as that of the Elise. Move the steering wheel, even just a little, and the car changes direction. Building up speed through the first set of turns, the car showed the same effortless grip as the Elise, showing a limit that we had not even begun to approach. The low mass and stiff suspension eliminate any idea of lean, and the grip is so good that rotation only enters the picture in the sharpest turns. Powering up the straightaway toward turn 5, the throttle proved as responsive as the steering. Lotus fits the Evora with a 3.5-liter V-6 built by Toyota.

Although it uses Toyota's dual variable valve timing system, it gets Lotus' own control unit, increasing horsepower and making peak power come on at lower engine speeds. This engine produces 276 horsepower and 258 pound-feet of torque, giving the Evora a Lotus-tested 4.9 s to 60 mph. Keeping the car in third gear on the straight acceleration showed no sign of letting up before we hit the braking zone. Around most of the track, third gear proved more than adequate for maintaining speed and accelerating, as it has a much wider power band than in the Elise. It was only when it pushed 100 mph on the main straight that three redline icons lit up on the tachometer, suggesting the shift to fourth gear.



Ford Racing unveils supercharger for 2011 Ti VCT V-8 engine



The 2011 Mustang just got racier with the announcement today of an all-new 2.3 liter twin-screw supercharger. Available for the first time to the public, the Ford Racing twin-screw unit can produce 624 horsepower SAE at 6,900rpm and 536 pound-feet SAE at 4,700rpm when mated to the all-new 5.0 liter 4V Ti VCT V-8 engine. "Superchargers are the ultimate in power upgrades for Mustang enthusiasts," the production calibration of the twin-independent variable cam timing was incredibly complex--taking engineers 19 months to perfect.

"After more than 100 hours of accelerated durability testing, the entire Ford Racing package performed flawlessly," said Dev Saberwal, Ford Racing's lead calibration engineer. "Ford Racing performance parts are subjected to extensive testing to ensure optimum performance across a broad range of conditions." The supercharger is available in three levels including: a 525 horsepower kit with a 12/12 warranty; a 624 horsepower kit, and a tuner kit for racing and extreme enthusiasts. The kits add 47 pounds to the weight of the car.

Kia Pop concept



The Kia Pop will make its world debut at the Paris motor show, but the Korean manufacturer has released these digital renders of the electric city car concept in advance. At three meters long, the Pop is similar in length to the Toyota iQ. It features a wave-like front bench seat making room for a single rear occupant behind the front passenger. Designed by a team headed by Gregory Guillaume at Kia's European design centre in Frankfurt under Peter Schreyer, the Pop mixes the Sportage's strong surfacing with a playful lozenge-shaped DLO.

The side window's angle and door handle position suggest scissor door openings. Kia's 'tiger' DRG seems to have been reinterpreted into what one might refer to as a 'tiger cub'. We're expecting fragmented lamp and inlet/outlet graphics to feature heavily in Paris and the Pop continues the zeitgeist hinted at by the Renault DeZir, with pixellated patterns appearing on its nose, tail and through its interior.



Nissan Nuvu

Nissan Nuvu is a concept designed to offer next generation car from Nissan with rear-mounted electric motor and lithium ion battery pack. The design of this concept car is quite unusual and small. For city use, the Nuvu's performance is more than adequate. Across the all-glass roof are a dozen of small solar panels. Basically, natural, organic and recycled materials are used to make its cabin. The steering of the car is very direct for quickness and maneuverability in the city. No one will have any problem in crowded roads and limited parking slots with this tomorrow's city car.



Automatic Parking

The wheel-scurfer's dream will soon be available on a whole range of luxury cars. Simply drive along a row of parked cars and the system is able to detect a space big enough for your vehicle to squeeze into.

Pre-scan technology:

This technology was also showcased in the Mercedes F700 concept, where lasers scan the road surface before the car drives over it. This prepares the suspension to react to the terrain accordingly and ensures peerless ride comfort.

Saab Alco Key:

Saab wants to help reduce the number of alcohol-related road incidents with this device by fitting it as standard - apparently, one in three traffic accidents in Europe is alcohol related. This fully integrated system requests the driver to blow into a wireless hand-held unit before driving the car. The breath is then analysed and if the blood-alcohol limit is exceeded, a red LED will appear and the engine will not start.

Happy Independence Day (DAuto merges up MANIT)

Good News :

A joint tie up has established in between DAuto Group of Companies and MANIT, Bhopal for the purpose of industrial activities and Institutional as well. So, Students can grab the opportunities to take more projects at DAuto Venue.



Student's Creation:

This contrive has been prepared and envisioned by Dauto CAD School student during the period of Training, through CATIA V5 Software.

Thank You ! !