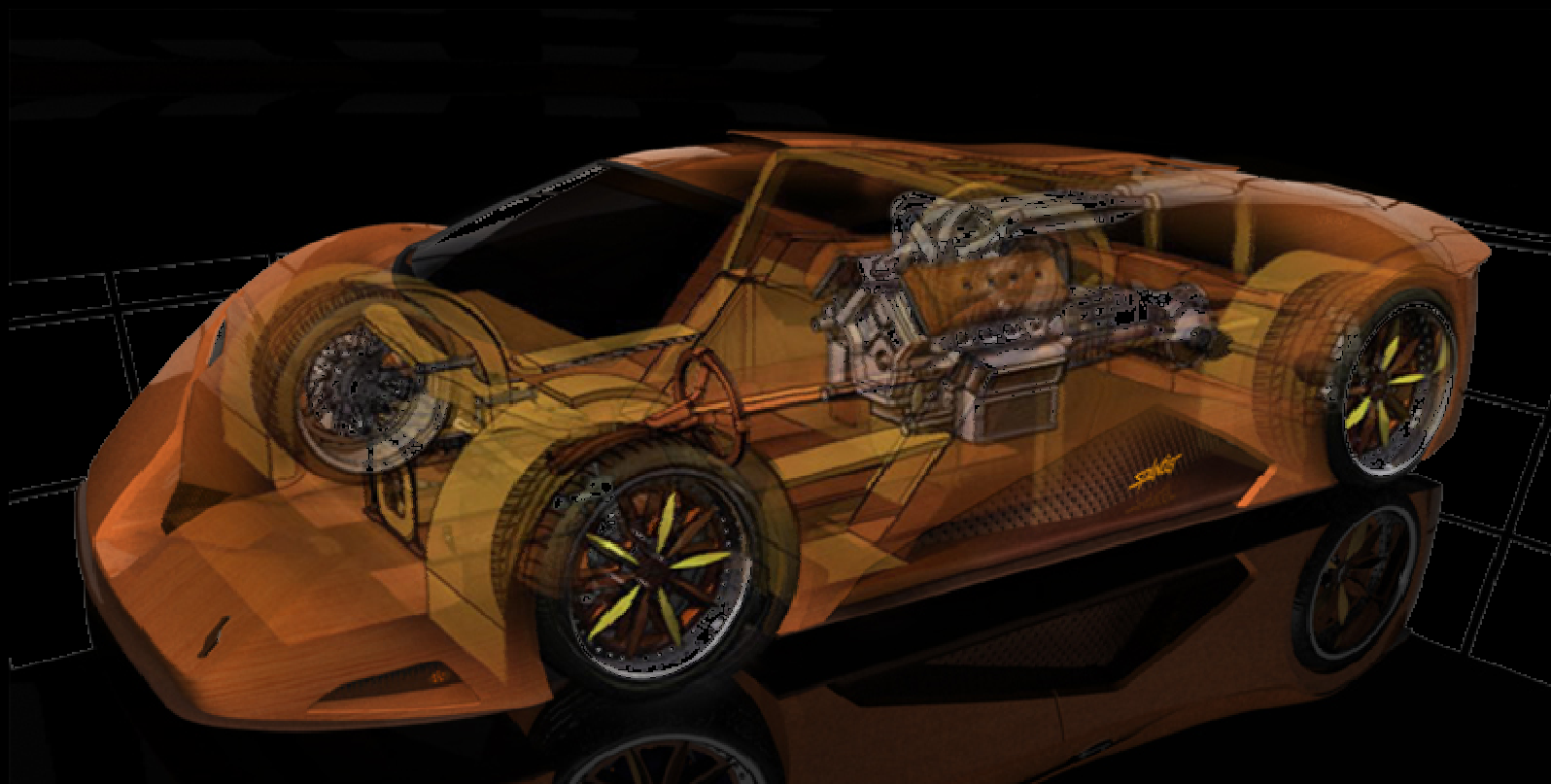


DAuto News Letter



Design engineers turn designs into reality. Without them, a great idea but nothing more than, well, a great idea.

Dimension Automotive Technology

Kia Ray (Concept)



Kia Motors America took the wraps off the Ray concept at the 2010 Chicago Auto Show. There's no denying the show car reveals a decidedly sportier side of Kia, the likes of which we've not previously seen (although the Forte Coup has definitely shown some flair). But beyond its sleek body, the Ray plug-in hybrid sedan is also proof that Kia is continuing to make strides with its Eco Dynamics sub-brand, the goal of which is to "develop innovative fuel-stretching and emissions-cutting technologies." Kia says the Ray concept "demonstrates a prospective plug-in hybrid vehicle configuration."

The 4-door, 4-seat Ray concept is a compact sedan based on the Fort platform. It's the fifth vehicle to come from Kia Design Center America in Irvine, California, over the last year (previous: Soul, Forte, Forte Coup and Sorrento). The Ray concept uses lightweight materials throughout (many which are recycled) to aid in the car's efficiency, along with solar cells embedded into the roof-top glass panel that power the climate control system. The roof also features glazing materials said to "dramatically" reduce heat in an effort to keep the interior cool.



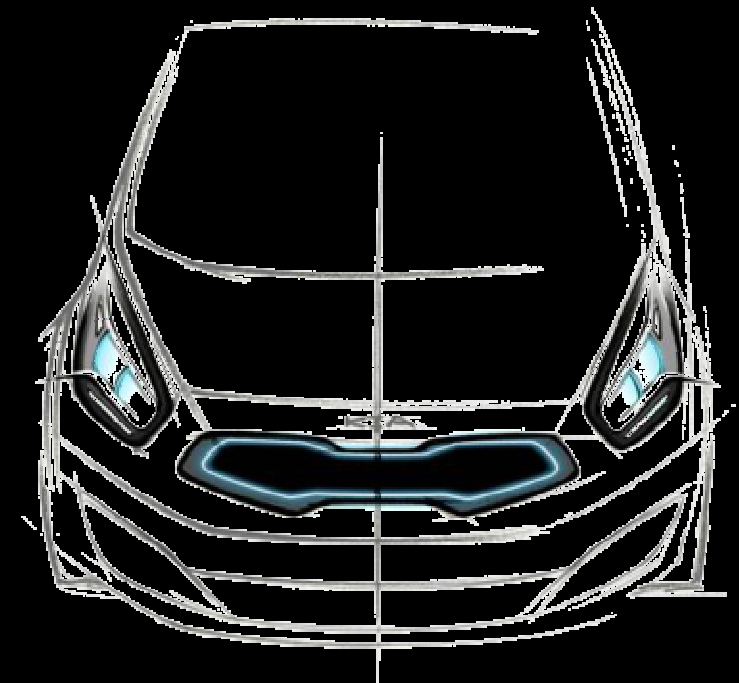
Dimension Automotive Technology



The Ray's exterior shape was inspired from aircraft design to achieve the utmost in aerodynamics, while a one-piece integrated underbody panel and narrow tires (195/50-20s) contribute to its drag coefficient of 0.25. Other notable features include driving lamps which slide rearward to form air intakes for the Ray's internal combustion engine, and a rear deck light which extends at higher speeds. Side view mirror and door handle duties are taken care of by flush-mounted motion-detector cameras.

Technical specifications

If built, Kia says the Ray's drivetrain could consist of a 153-bhp 1.4-liter Gasoline Direct Injected (GDI) 4-cylinder, a Continuously Variable Transmission (CVT) and a 78-kW electric motor fed by lithium-ion polymer batteries. Power can be sent to the front wheels via the electric motor, the gasoline engine, or both. Kia claims the Ray concept can drive 50 miles on pure electric power. As a plug-in HEV (Hybrid Electric Vehicle), the Ray, according to Kia, delivers 202 mpg; as a pure HEV, it returns 77.6 mpg. Total range is 746 miles. Top speed is 109 mph.





Baritone's Alfa Romeo Pandion concept

The raging torrent of pre-Geneva Motor Show leaks is officially in full effect today as a series of images showing off Baritone's new Alfa Romeo Pandion Concept have hit the Inter webs (thanks Unica-Strada!) First of all, what the heck is a Pandion Simple: a type genus of the Pandionidae. That'd be an osprey, sometimes known as a fish hawk. Moving on, then.

. To our eyes, the Pandion isn't really what we've come to expect from Alfa Romeo, at least not styling-wise. The Italian marque's classically flowing curves are present and accounted for, but they are bisected by swaths of what appears to be clear plastic. The rear-view is especially busy – kinda like it's fashioned from hundreds of containers worth of Tinker Toys. Oh, and fans of *Battle star Galactic a* are sure to appreciate the Pandion's head-on viewed

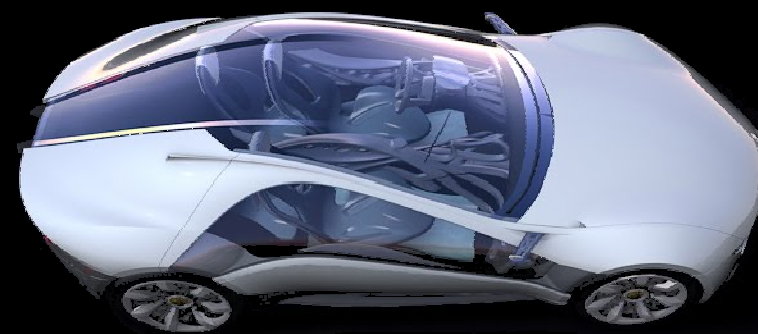


Dimension Automotive Technology



Stile Bertone – which until recently was led by Jason Castriota, the man responsible for such far-out designs as the Alfa 8C-based B.A.T. 11 and the Corvette ZR1-based Man tide – penned the Pandion, and we do see some influence from the styling house's past designs. We don't yet know what's underhood of the uniquely styled concept, or really anything else about it not revealed by these images. That said, see for yourself below and, as always, let us know what you think in the Comments

Manufacturer	Alfa Romeo
Production	2010–
Assembly	Cassino – Piedimonte S. Germano, Italy
Predecessor	Alfa Romeo 147
Class	Small family car
Body style(s)	4-door hatchback
Layout	FF layout
Platform	Fiat Group "C-EVO" also called as "Compact"
Engine(s)	<ul style="list-style-type: none"> •Petrol: 1.4 I4 Turbo •1.4 I4 Turbo <i>Multicar</i> •1.75L I4 Turbo •Diesel: 1.6 I4 <i>JTDM</i> •2.0 I4 <i>JTDM</i>
Transmission(s)	6-speed manual 6-speed Dual Dry Clutch Transmission <i>FPT C635</i>
Wheelbase	263 cm (104 in)
Length	435 cm (171 in)
Width	180 cm (71 in)
Height	143 cm (56 in)
Designer	Centro Stile Alfa Romeo



Honda's new 3R-C concept



Honda's new 3R-C concept, a single seat battery-powered electric vehicle, is set to make its world debut at the Geneva motor show next week. It will take center stage at the stand alongside the EV-N show car, U3-X electric personal mobility vehicle and the FCX Clarity, the Japanese automaker's fuel-cell electric vehicle

Created by European designers working at Honda's Research and Design facility in Milan, the three-wheeled 3R-C concept envisions a future minimal urban transport vehicle for one person. The battery electric drive train is mounted low in the three wheeled chassis, keeping the center of gravity low and improving stability.

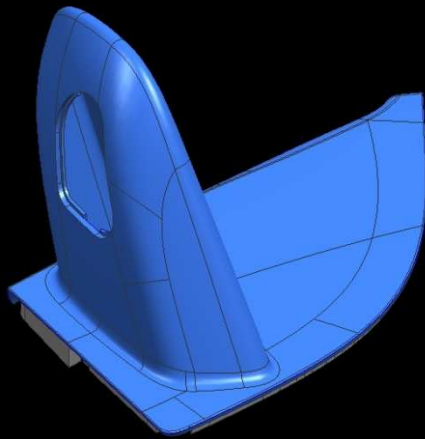
With a clear canopy that doubles as a protective windshield and covers the driver's seat while the vehicle is parked, the 3R-C's designers also created a flexible cover that surrounds the upper torso to reduce exposure and improve comfort. The 3R-C also features a 'safety shell' seat with high sides - to reduce the threat from side impact - and a lockable storage area ahead of the driver.



Good News for DAuto CAD School Students

DAuto is going for placement drive

Dear student be ready DAuto is going for recruitment . According to our company policy we always give priorities to the student of our training cell “DAuto CAD School”



This part “Mostrina “is designed
by the student DAuto CAD School

Thank You ! !