

2017

DAuto Newsletter

JULY EDITION



Design engineers turn designs into reality. Without them, a great idea but nothing more than, well, a great idea.

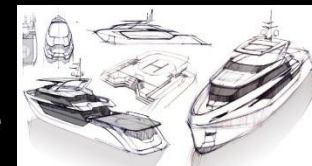
Greywolf, 40-meter explorer yacht by Politecnico di Milano Specializing Master

Greywolf, Politecnico di Milano Master in Yacht design project, is a 40-meter explorer yacht concept designed for owners who want to travel with no limit in their destination and activities onboard.

Her DNA is embedded in her exterior design to cruise anywhere safely. Tall bow and a diagonal chine protect the guests from big waves when cruising rough sea environment. Touch & go helipad is located aft to transport passengers in case of emergency. An anchor pocket is integrated with icebreaker to navigate through polar seas. These explorer's features are harmonized in stylish fashion.

Starting from the sun deck, this space maximizes the pleasure of being in an open-air with panoramic view from the top. Three entertainment features are welcoming the guests. A Jacuzzi is set forward surrounded by a circular sun bed. It offers an unobstructed view of horizon and lets in a mild sea breeze thanks to a handrail protected once again with clear glass. The deck continues with a bar and an outdoor cinema. Towards aft, a projector screen slides up and down from the top. A retractable sunroof controls the sunlight exposure.

At the same time, the yacht is made for those who consider a reasonable amount of budget and comfort. Semi displacement hull is introduced to maximize the fuel efficiency and provide comfort at anchor. Rooted from seaworthiness, this yacht is designed to serve as a pleasure craft as to take a closer look into deck by deck. Each deck is arranged according to the customer's different needs.



Greywolf, 40-meter explorer yacht by Politecnico di Milano Specializing Master

The upper deck serves as a control tower of the vessel and a living space dedicated to the owner. It offers a master's stateroom, a wheelhouse and a captain's cabin. Size and privacy are mainly considered for designing the owner's space. Full beam interior allows a generous 86m² of space solely for the owner. Thanks to perfectly ensured privacy by separating the space from guest / crew area, it can be arranged as a door less space. This creates even greater sensation of openness. Plus 34m² of a large aft terrace allows the owner to enjoy outdoor space with privacy. Whereas conventional explorer yachts install the windshield vertically or in reverse direction, the windshield of the this yacht is inclined downwards to introduce more style, adding the sleekness to the profile. An overhang on top of the windshield cope with glare from sunlight.

The main deck is composed of a very large exterior space in the aft and a social living area. From the stern to the aft cockpit is stretched to nearly half the length of the yacht for various outdoor activities. Touch & go helipad has 51m² of space, which can afford Euro copter's EC135, 10m model of its length.

Besides its main use, the helipad can be used for loading tenders and jet skis and also for sunbathing. Heading forward, a pair of Jacuzzi and a central lounge sofa offers extra options to enjoy the sun. With "al fresco" dining table, the deck then welcomes the guests inside with unique central column.

Two TV screens are built in the column facing both inside and outside, which allows the luxury to enjoy a movie from the aft sunbathing area. The main saloon is decorated with modern and luxurious touch. The galley is arranged close to main saloon to serve meals in any time.

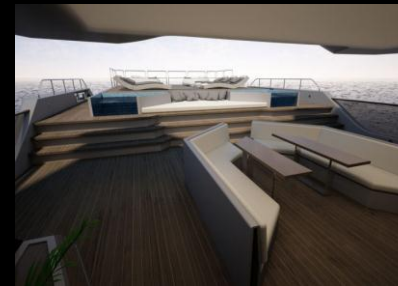
Greywolf, 40-meter explorer yacht by Politecnico di Milano Specializing Master

The lower deck is arranged with beach club and ample accommodation for guests and crews. The beach club allows seamless access to sea. It provides extra openness and also protection by having its door built with tinted glass. The guest area has 2 VIP double and 2 twin cabins for 8 guests. The crew mess is located forward and includes 3 double cabins for 6 crews. Aft to the engine room locates an extra storage space to store water toys.

To have a clear idea of its dimension, Greywolf is made in 40m length over all, 8.86m of beam and 2.65m of draught. 402 tons of displacement, the boat boasts a maximum cruising range of 5,000nm, long enough to travel across the Atlantic ocean. It has a fuel capacity of 85500L and 7400L of freshwater.

The yacht is built in semi-displacement type with steel hull and aluminum superstructure. It is fitted with a pair of MTU 12V 2000 M61 engines for a top speed of 13knots, cruising speed around 11 knots.

The boat's accommodation is 10 guests (2 for the owners) and 7 crews (1 for the captain)..



Porsche to join Formula E from 2019

Sportscar manufacturer joins the wave; will retire from LMP1 at the end of current season

This is it. No, not in an end of days sort of way, but in a sense of the big changes. The new beginnings, when things get serious and intense. This is it. If people were still denying that Formula E will be or is an evolution in motorsport and racing technology, they must have seen the light by now. Porsche, the maker of the legendary 911, the one that made the revolutionary 918 hypercar, has announced that it too will be joining the Formula E fray with a factory team in season 6, i.e., 2019.

It shouldn't have been that surprising though, given that Porsche is among the many manufacturers who have committed to offering all-electric vehicles in the near future, in this case, Mission E which is part of Porsche Strategy 2025.

"Entering Formula E and achieving success in this category are the logical outcomes of our Mission E road car programme. The growing freedom for in-house technology developments makes Formula E attractive to us," added Michael Steiner, Member of the Executive Board for Research and Development at Porsche AG. "Porsche is working with alternative, innovative drive concepts. For us, Formula E is the ultimate competitive environment for driving forward the development of high-performance vehicles in areas such as environmental friendliness, efficiency and sustainability."



Porsche to join Formula E from 2019

This is fantastic news for Formula E and for motorsport fans who were still on the fence of following the series full time. In the build up to 2016, it should be able to get more tracks and further build its value in terms of entertainment and fan engagement. Let's just quickly go through which factory teams will be on the Formula E grid in season six as of now: Audi, Jaguar, Mercedes-Benz, Renault, Mahindra, NextEV, Faraday Future (they're building the 1050bhp Tesla rival), DS Automobiles, and now Porsche too. and the only thing still missing from this grid, is perhaps the participation of a recognizable Italian carmaker.

It's not all bad news though for WEC fans as Porsche will continue to focus on its participation in the GT class with the recently developed 911 RSR.

Back to Porsche though, because it seems to be the norm that if a carmaker is joining FE, they're probably calling it quits from a different format. Yep. Porsche will be pulling out of the LMP1 category of WEC at the end of this season after what has definitely been a dominant run with back to back World Championship titles. However, it will be keeping the LMP1 team fully intact to help prepare for other racing series and examining other areas of development.



Triumph Tiger Explorer

Triumph brings updated version of adventure tourer to India

Triumph has launched the new Tiger Explorer XCx to add to its line of off-road, adventure touring motorcycles. The new Explorer XCx gets a host of tech upgrades with what Triumph claims to be an emphasis on active technology to ensure stability and control.

The new features include semi-active suspension, cornering-optimized switchable ABS and traction control, and has introduces rider modes. The rider modes are Sports, Comfort and Normal, which alters the configuration of the bike to suit riding style and riding conditions. The semi-active suspension allows the rider to electronically control the adjustment of the front and rear suspension dampening. The new Explorer also features an Inertial Measurement Unit that ensures better stability by optimizing the performance of the ABS and traction control systems.

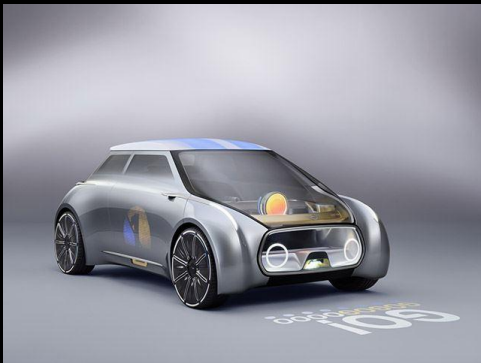
The Tiger Explorer XCx uses the same 1215cc, 3-cylinder engine which has a peak output of 135bhp and 121Nm of torque. Another new feature is the electrically adjustable screen which is a first in its class. Triumph has priced the new Tiger Explorer XCx for Rs 18.75 lakh (ex-showroom, India).



BMW will build an all-electric Mini in 2019

The entire BMW range will be electrified in the future.

BMW has announced how it plans to embrace electrification in the future, revealing the development of a flexible vehicle architecture that will enable every model and series to be electrified, either as a plug-in hybrid or all-electric model. Part of this strategy will include an all-electric Mini starting production in 2019 based on the current three-door hatchback. The electric drivetrain will be built at BMW's e-mobility center in Bavaria before being integrated into the car at Mini's Oxford plant, despite previous concerns over Brexit.



“Electrification is one of the central pillars of the BMW Group’s corporate strategy NUMBER ONE > NEXT and the company has announced that all brands and model series can be electrified, with a full-electric or plug-in hybrid drivetrain being offered in addition to the combustion engine option,” BMW said in a statement. “Additional electrified models will be brought to market in the coming years and beyond 2020, the company’s next generation vehicle architecture will be structured in order to enable new models also to be offered as a full-electric vehicle.” An all-electric Mini has been in the pipeline for a long time now.

BMW will build an all-electric Mini in 2019

It ultimately paved the way for the BMW i3, but never spawned a production all-electric Mini, bizarrely. “BMW Group Plants Dingolfing and Landshut play a leading role within our global production network as the company’s global competence center for electric mobility,” said Oliver Zipse, BMW AG Management Board member for Production. “Our adaptable production system is innovative and able to react rapidly to changing customer demand. If required, we can increase production of electric drivetrain motor components quickly and efficiently, in line with market developments.” BMW’s electrified model range will expand rapidly in the next few years.



Next year will see the launch of the hotly anticipated BMW i8 Roadster. There's also the all-electric X3 slated for 2020, while the BMW iNEXT will follow in 2021. BMW expects electrified vehicles to account for between 15 to 25 percent of sales by 2025. Factors such as regulation, incentives and charging infrastructure will determine the scale of electrified vehicles from market to market. Because of this, BMW will develop a modular platform that allows models with a combustion engine, plug-in hybrid or fully electric drive train at the same time.

2018 Dodge Charger Pursuit Can Save Officers From A Rear Ambush

You can never be too careful these days.

Automakers, specifically GM, Ford and FCA, continuously work to find ways to improve their police department vehicles, and FCA has just announced a pretty cool upgrade for the 2018 Dodge Charger Pursuit. The new Officer Protection Package, according to the automaker, "is designed to increase an officer's situational awareness when parked and working inside the Charger Pursuit." Here's how it works:

A tripped sensor is capable of initiating a signal for doors to lock, front windows to roll up, reverse lights to turn on, and tail lights to flash. This sensor system is quite similar to what Ford has done with its own lineup of police pursuit vehicles.

The Inter Motive's Surveillance Mode Module with FCA's Fleet Safety Group technology – Park Sense rear park assist system, Park View rear backup camera, and Rear Cross Path detection – to alert officers when movement at the rear of the vehicle is detected. What's new for 2018 is the Rear Cross Path detection, a system that warns drivers of lateral traffic when backing out of parking spaces. When the Inter Motive's module is activated, additional sensors will turn on, resulting in an increase of the area monitored. It will also provide additional security for the officer inside the vehicle. When the sensors detect motion, there'll be a chime sound to alert the officer, who can also immediately see what's behind the vehicle through a monitor.



FCA Could Be Building A High Horsepower 'Angel' To Quell Its Demon

FCA seems determined to fight its self-created demons with heavenly horsepower figures and no roof.

Anger is such a powerful emotion. It enables its infected subject to subvert pain, fear, and logic and gives them seemingly endless amounts of energy with which to level anything in their path. It's why Dodge uses such aggressive words to address its angriest cars, the Charger, Challenger, Hellcat, and now, the Demon. But any good warrior knows that anger clouds judgement, and the only way to consistently win battles is to come from a place of peaceful yet purposeful and focused will to defeat the forces of evil.

A name like Angel would be perfectly suited to a drop top that brings its occupants closer to the heavens if FCA doesn't go with the Barracuda or 'Cuda names it's recently patented. Keep it up FCA, we like this renewed sense of confidence.

On July 17th of this year, FCA filed a trademark for a model named "Angel" with the United States Patent and Trademark Office (USPTO), specifically slotted under the section covering "Motor vehicles, namely, passenger automobiles, their structural parts, trim and badges."



The fact that the patent was filed so recently means that any physical manifestation of the Angel, be it a trim level, package, or model, only exists at top secret testing grounds and won't be seen on the roads until at least a few years from now, but that happens to coincide with when FCA will unveil its new flood of muscle that comes (hopefully) powered by Hemi V8s. Within a few years, Dodge will phase out the current Challenger, which has been around for an almost alarming nine years, and replace it with a successor. Phase two of those plans will be embodied in a lightweight convertible with the handling capabilities to match or surpass the Ford Mustang and Chevrolet Camaro.

Just what on Earth is FCA planning? There's no way of knowing, but Motor Authority postulates that it might be something endowed with hellaciously high horsepower numbers bundled into a feel good package that'll give pacifists a way to enjoy performance while remaining in their places of zen.

This Bentley Continental GT Convertible Has Yacht-Inspired Styling

Bentley is certainly no stranger to special editions, especially when it comes to even more luxury. So it comes as really no surprise that it's just revealed the yacht-inspired Continental GT Convertible Galene Edition by Mulliner. Mulliner is, of course, Bentley's bespoke division, who was tasked with creating the ultimate division of the UK carmaker's long-running convertible. Powered by the familiar 4.0-liter twin-turbo V8, the big convertible's styling was inspired specifically by – you guessed it – luxury yachts.

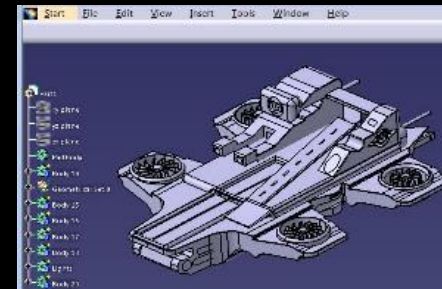
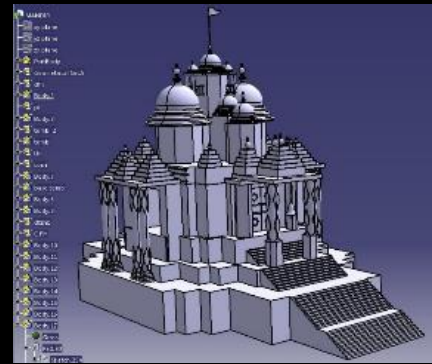
There's also an additional Glacier White stowage case and fascia panels, which can be ordered with a hand painted Jaume Vilardell illustration of a super yacht. Lastly, Mulliner also created a new material finish, Pinstripe Walnut. This surface is used in open-pore form in the center stack and console. All told, Bentley will build just 30 examples, but no word on pricing.

Bentley says the Galene Edition "combines the best elements of an oceanic lifestyle and luxury convertible motoring." External styling has an ocean influence, specifically the "sparkle of crystal clear waters," and yet the paint is called Glacier White. It also features lower brightware in Sequin Blue, which is supposed to remind one of the ocean. Notice the 21-inch polished Propeller wheels. The interior pays homage "to the classic opulence, finest hand-crafted materials and exquisite details." This includes seats with Linen and Portland hides with Camel hand cross stitching. Door panels, center console, armrest, and the dashboard are Linen, Portland and Brunel.



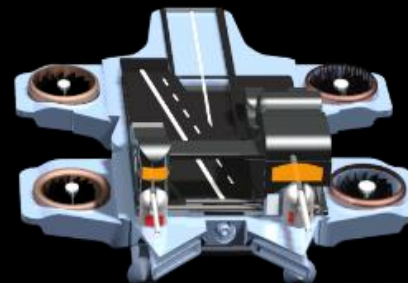
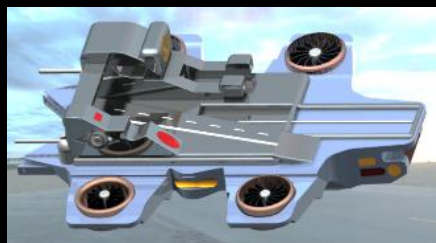
STUDENT'S CORNER

DAuto Training Yield



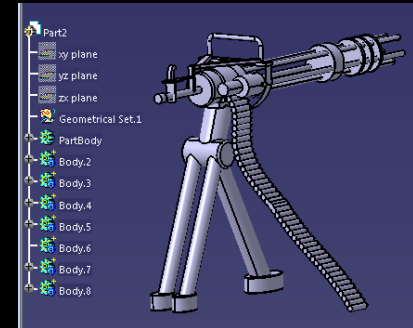
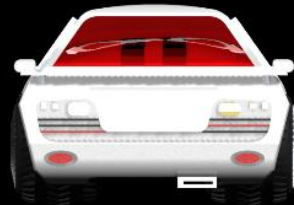
By :
Ashutosh Tiwari
J.U.E.T.
(GUNA)
Design Tool :
CATIA V5

By :
Shubham Pawar
T.I.T. Excellence
(Bhopal)
Design Tool :
CATIA V5



STUDENT'S CORNER

DAuto Training Yield

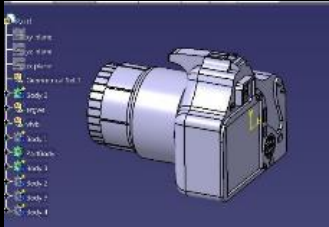


By :
Abhishek Chouhan
J.E.C.
(Jabalpur)
Design Tool :
CATIA V5

By :
Shubham Narware
LNCTS
(Bhopal)
Design Tool :
CATIA V5



STUDENT'S CORNER



DAuto Training Yield



By :
Ashutsh Tiwari
J.U.E.T.
(GUNA)
Design Tool :
CATIA V5



By :
Parag Parihar
M.I.T.,
(Mandsaur)
Design Tool :
CATIA V5



More info about training:

Toll Free # 18001234011

E-mail : training@dauto.co.in

**CONNECT
THROUGH**



visit us at www.dauto.co.in

Thanks for reading..