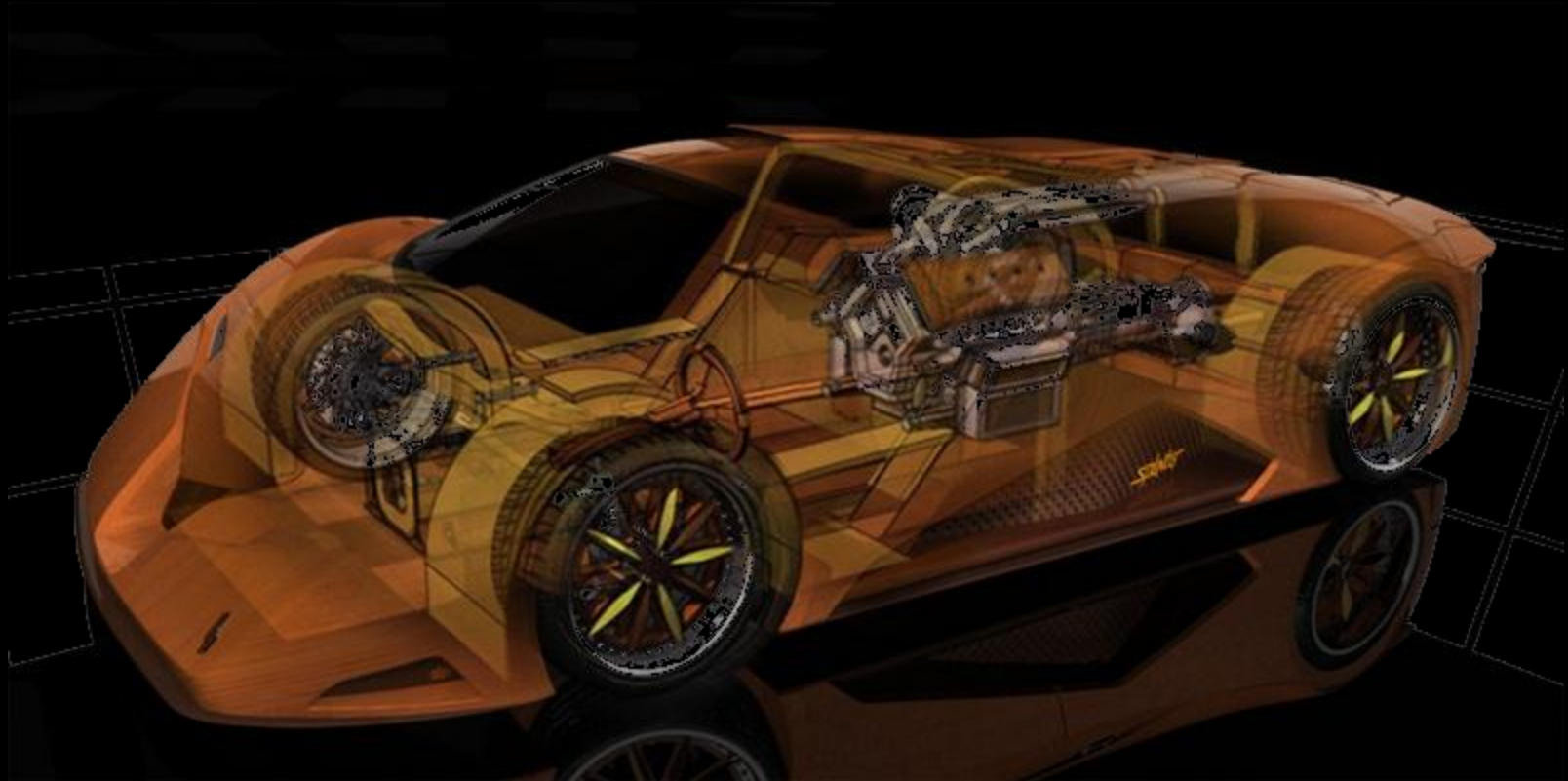


June 2012 Edition

DAuto News Letter



Design engineers turn designs into reality. Without them, a great idea but nothing more than, well, a great idea.

Bugatti Veyron 16.4 Grand Sport



An upgraded version of the open-top Grand Sport, the Vitesse's engine comes from the now sold-out Super Sport coupe. That means four larger turbochargers, an extra 200 hp, and performance to make your knees quiver.

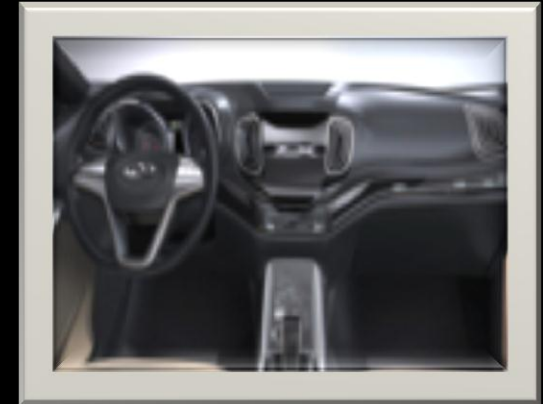
Technical Specifications :-

- Top speed is 255 mph with the roof panel in place, or a breezy 233 mph with it removed. Bury your right foot and 0-186 mph takes 16 seconds, slam on the 15.74-inch carbon-ceramic brakes and you'll screech to a stop 7.9 seconds later.
- Engine: 8.0-L W-16 quad-turbo, 1200 hp, 1106 lb-ft
- Transmission: Seven-speed dual-clutch auto
- Drive: Four-wheel drive
- Speed : 0-60 mph: 2.5 seconds

Chery TX Concept



The brief for the concept was to be a 'target-customer oriented SUV'.



Technical Specifications:-

- The SUV is 4465mm long, 2082mm wide and 1670mm tall, with a 2825mm wheelbase.
- The TX will be powered by a turbocharged direct injection gasoline engine (TGDI), capable of peak 193 hp/5500rpm and maximum torque of 290N·m/1800rpm.
- Inside, the 'water' theme continues throughout features such as the air vents, steering wheel and center console.



Lazzarini, Ferrari-Powered Fiat 550 Italia



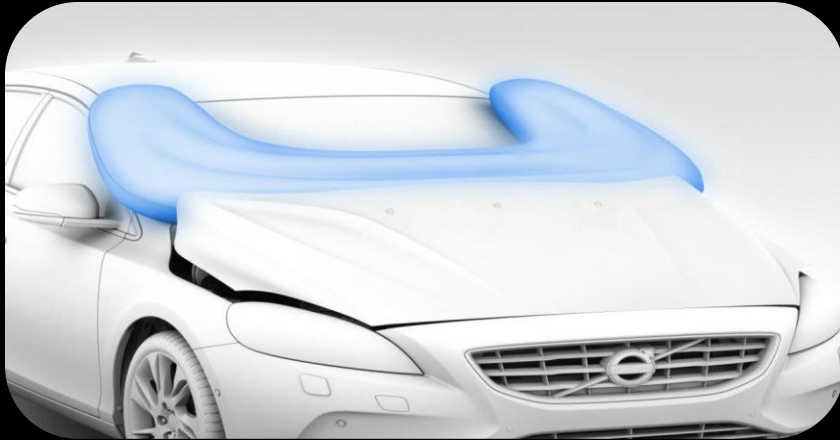
An Italian design company has dreamed up a unique Fiat 500 with the engine in the back, but not just any engine. We're talking about the 90 degree V8 from the Ferrari 458 Italia, together with its gearbox.



Technical Specifications:-

- *The engine was slightly detuned from 570HP to 550HP because in the simulator the excess of torque could badly balance the car during fast shifting operations.*
- It has two ballasts in the front and in the middle of the chassis for an approximate total weight of 2200lbs to achieve an optimal weight distribution.
- The interior of the V40 features a fixed panorama glass roof that stretches from the front windscreen to the backrest of the rear seats, interior lighting designed to give a "theater lighting" feel, and a frameless interior rear-view mirror inspired by modern smart phone designs.

New Volvo V40 Pedestrian air bag



Seven sensors, advanced technology and an airbag that deploys at lightning speed in the windscreen area. These are some of the main elements of Pedestrian Airbag Technology - the system that makes Volvo Car Corporation with its all-new V40 the first manufacturer with a pedestrian airbag.

Technical Specifications :-

- Seven sensors embedded in the front of the car transmit signals to a control unit.
- The bonnet hinges are each equipped with pyrotechnical release mechanisms which, when the system is activated, pull out a pin and release the rear of the bonnet panel.
- The system is active at speeds between 20 and 50 km/h. 75 percent of all accidents involving pedestrians take place at up to 40 km/h.
- During the inflation sequence the airbag raises the bonnet. It is lifted ten centimeters and stays in the raised position.



Aston Martin AM 310 Vanquish



Aston Martin has released details of its 2013 AM 310 Vanquish, the modern interpretation of its classic luxury sports car which is set to replace the DBS.



Technical Specifications :-

- Two-door coupe body style with 2+0 or optional 2+2 seating .
- Aluminium, magnesium alloy and carbon-fiber composite body.
- Fuel tank capacity: 78 litres (17.2 Imp.galls, 20.5 US galls.
- Max power: 565 bhp at 6,750 rpm ,Max torque:457 lb ft at 5,500 rpm.
- Fully catalysed stainless steel exhaust system with active bypass valve.
- Dynamic Stability Control (DSC) with Track mode.



Renault Alpine A110-50



Unveiled
at the
2010
Paris
Motor
Show

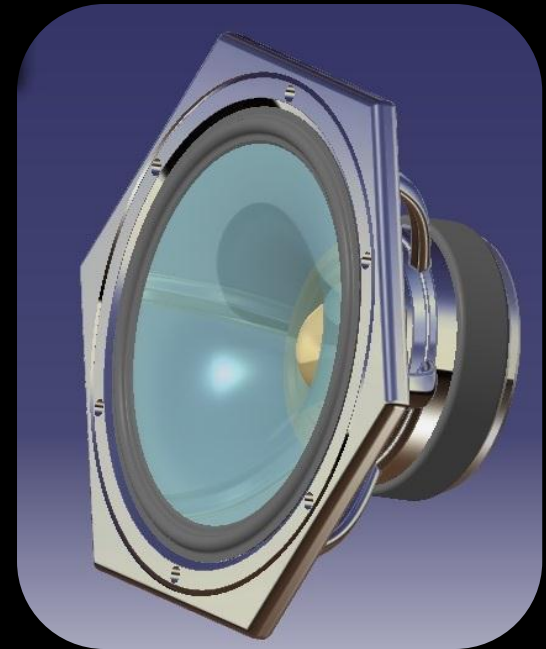
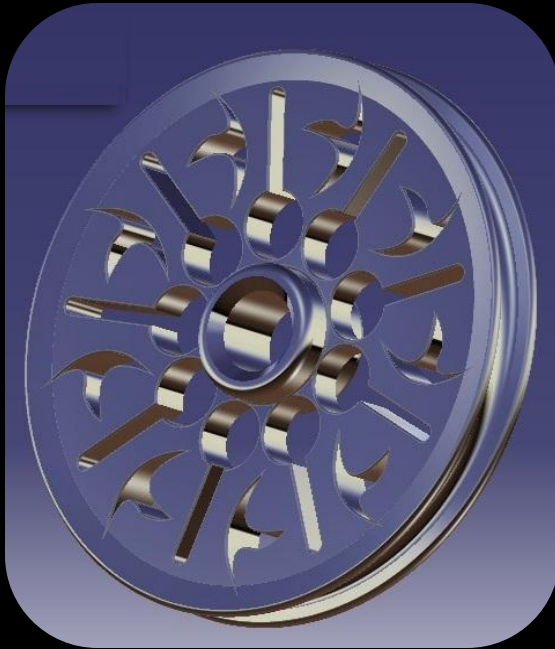


Technical Specifications :-

- The car measures 4,330 mm in length, is 1,961 mm wide, 1,230 mm high and with a 2,625 mm wheelbase.
- Hefty 14-inch front brake discs are pressed by six-piston calipers, while the 13-inch discs out back make due with four-piston units.
- Renault placed a 3.5-liter V6 mid-ship with a full 400 horsepower on hand.
- A dual-clutch six-speed gearbox allows the driver the choice of disengaging the transmission via a floor-mounted clutch pedal or shifting via steering-wheel mounted paddles.



Student's Corner



This contrive has been prepared and envisioned by a student, Yogesh Kumar, of the DAuto CAD School during the period of Software Training on CATIA V5

Demo Class On Courseware:

Grab the opportunity to get your seat reserved for demo class, that too free of cost.

Those who have chosen BE as your career or those who are planning for, may contact.

Also special visit of professional is available to get acquaintance.



Chair

Special Class On Design & Development:

Mr. Vikas Pandey , who have a decade experience in the field of research, design & development of Automotive, will facilitate the attendees regarding opportunity in the same at Dauto CAD school. For assistance contact us at below furnished details:

9752006008/9981500100

E-Mail us at : training@dauto.co.in



House

Thank You !!