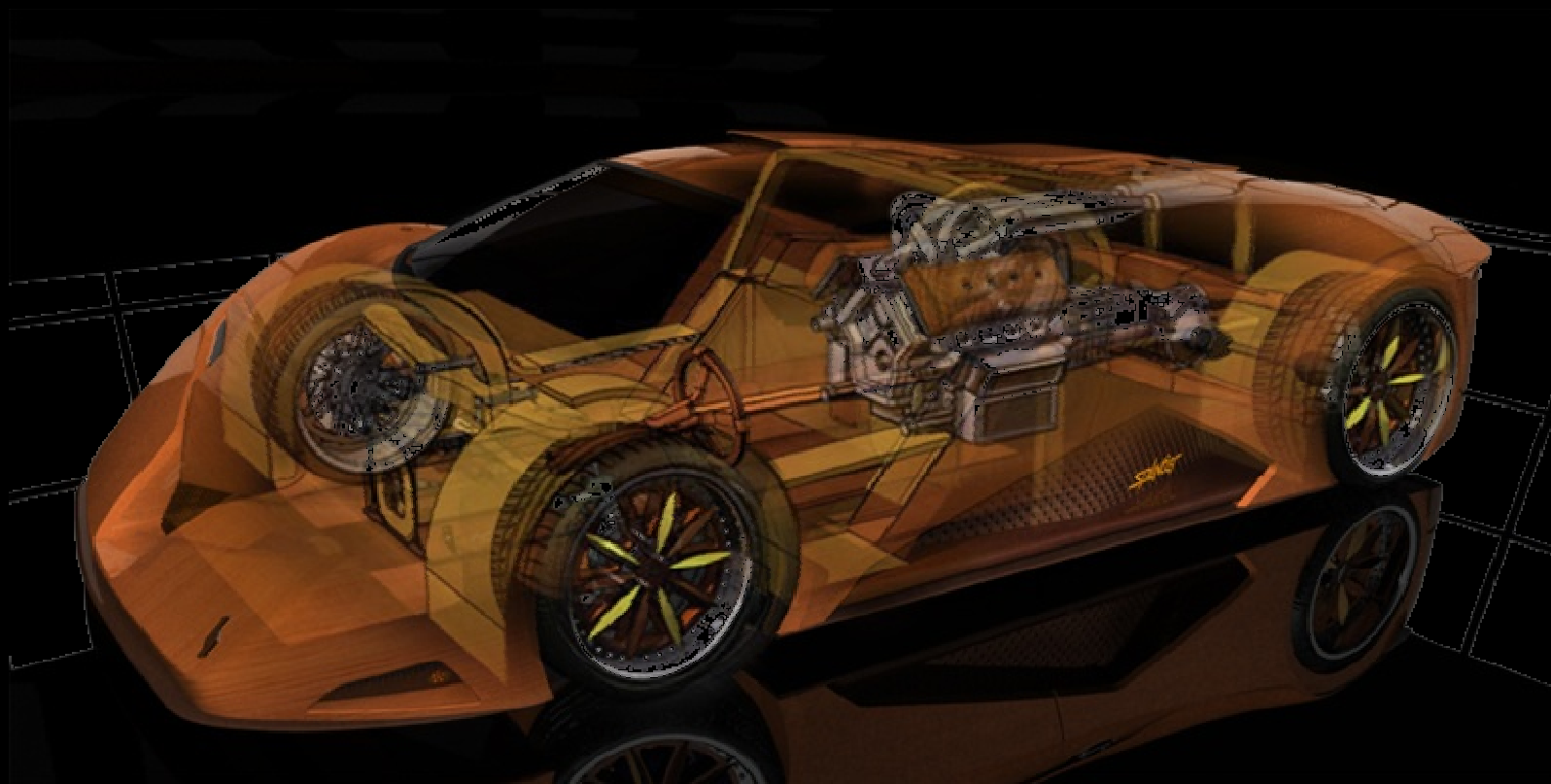


March 2011 Edition

## DAuto News Letter



*Design engineers turn designs into reality. Without them, a great idea but nothing more than, well, a great idea.*

## 2011 Porsche Panamera



Porsche has announced that they will begin offering a Panamera Turbo Powerkit that increases engine output to 540 hp, 40 horses more than the standard 500 hp model. Other personalization upgrades include a Sport Design Package and the new 20-inch Panamera Sport wheels for the Panamera Turbo and the other Porsche V6 and V8 Panamera models. The Panamera Turbo Powerkit features two new turbochargers with titanium aluminium turbines, and engine management has been adapted to provide a further improvement in engine response. Maximum torque rises to 750 Nm compared to 700 Nm in the standard Panamera Turbo. If in Sport Plus mode, which is included in the Sport Chrono Turbo Package that is part of the Panamera Turbo Powerkit, torque rises to 800 Nm. This is an increase of 30 Nm over the standard Panamera Turbo fitted with the optional Sport Chrono Turbo Package and in Sport Plus mode.

## 2011 Porsche Panamera



### General Information

Car type: Four-door, four-seater sedan

Layout: Front engine/RWD or AWD

Main dimensions (L x W x H): 195.7 x 76.1 x 55.8 in (4,970 x 1,931 x 1,418 mm)

Kerb (curb) Weight: 3,390 lb (1,540 kg)

Engine and transmission

Type: V-6, V-8 and turbocharged V-8

Power output: 300-500 bhp

Transmission: Six-speed manual or seven-speed sequential

Performance  
0-60 mph: Panamera S: 5.3 seconds; Turbo: 4.1 seconds

Top Speed: 175 – 188 mph

## 2011 GMC Granite



GMC granite concept looks has a great style and professional classes. Looks short in the nose and length as minivan. The GMC 2011 granite powered by 1.4-liter turbocharged four-cylinder 138HP and mated with six-speed automatic transmission. 20 in. wheels is used in this GMC granite model.

As a general rule, the GMC does not produce concept vehicles, but this year's Detroit Auto show, which will change. granite is badged as a vehicle "urban GMC utility, compact crossover that can be automated under the ground and to something quite unique brand. GM did not disclose what the platform, where the granite, but tend to share many parts with: GM's Global Compact (Delta II) architecture . This means that the granite will have a lot in common with the new Chevy Orlando, but the wheelbase is two inches shorter and several other unique features that you can read about the flight.



## 2011 GMC Granite

Compare with the GMC's Terrain crossover, the Granite 2011 has just two feet shorter. Vehicle dimension is 161.3 in. long, 70.3 in wide and 60.5 in. tall. The cars is close to the ground and 3.5 inches wider than Honda Fit. The gearbox is just like the Jaguar, it is controlled by a rotating electronic gear selector.



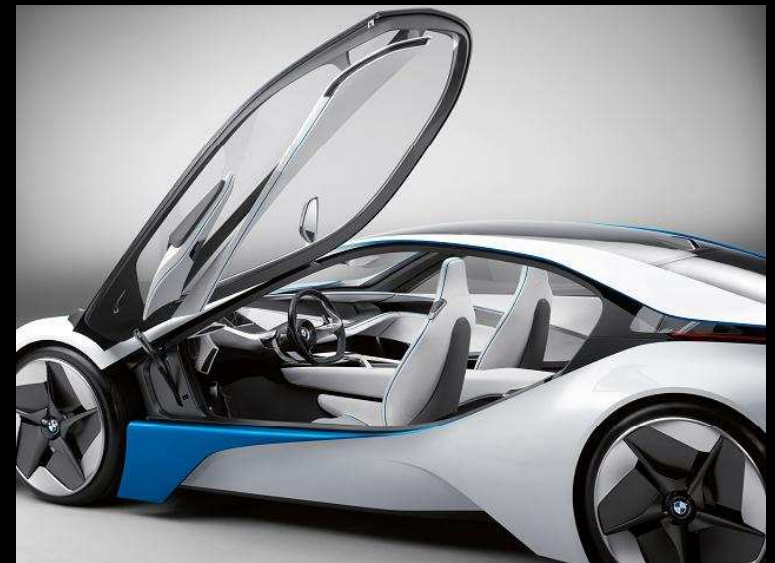
interior is visible in the picture above is very luxurious and majestic look for a concept car, 2011, brown color and each layer as a sparkling white diamonds make this car look more luxurious to be owned by a collector car, technology is seen also look sophisticated and not outdated.

## BMW Efficient Dynamics and Mega City

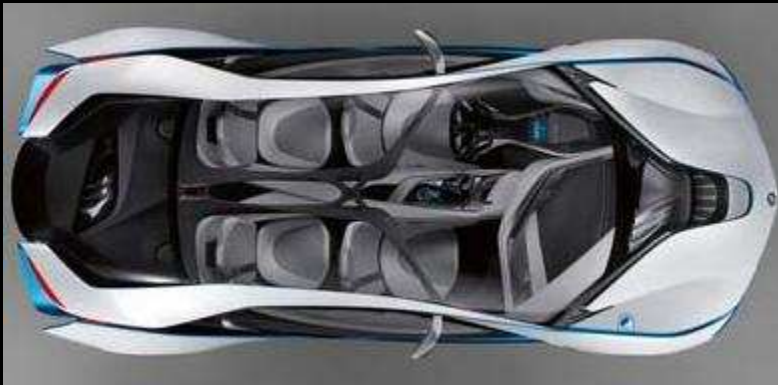


BMW has announced the name and also the date of its 2 all-new alternative-powertrain high-tech carbon-bodied cars. The plug-in diesel-electric AWD supercar, based mostly on the Vision EfficientDynamics concept, can reach dealers because the i8. The artist formerly called the Mega town Vehicle, a pure-electric town automotive, are going to be known as i3. each are going to be launched in 2013.

The lithium-ion batteries are stored within the center, protected by sturdy aluminum perimeter beams, and also the powertrain and suspension are mounted during this chassis structure. Passenger compartment and exterior panels are of carbon fiber. BMW calls the concept LifeDrive. The Drive half is aluminum; the Life half (for the occupants) is carbon fiber. These light-weight materials can aid in cancelling out the extra weight of a battery.

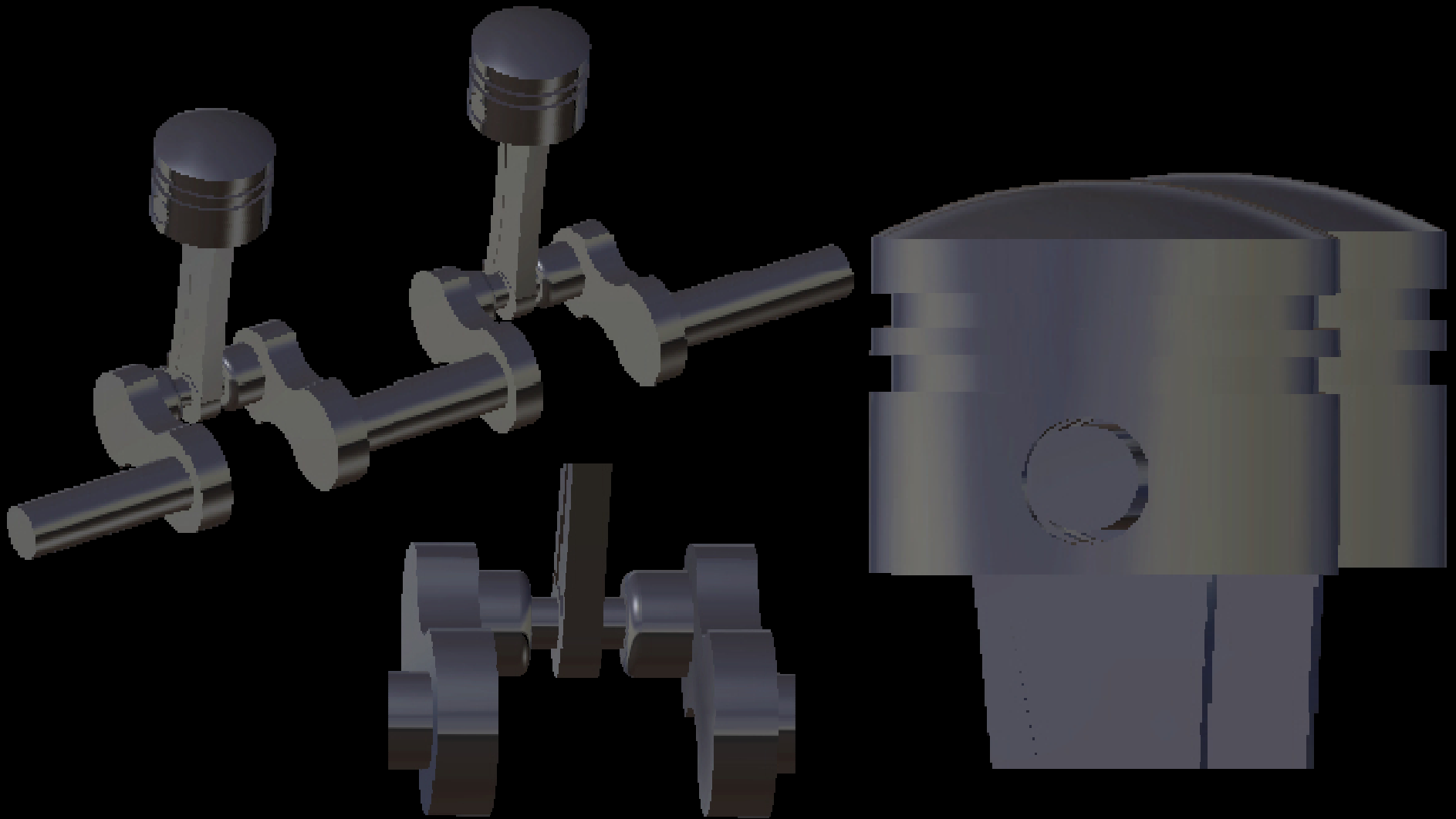


## BMW Efficient Dynamics and Mega City



The battery, electronics, and motor for the i3 are being proved on a fleet of a thousand ActiveE cars, a one Series coupe with an EV drivetrain, that was launched at the Geneva show in March. It hits sixty mph in regarding 9.0 seconds, due to a 168-horse electrical motor. It often charged from a 32-amp 220-volt outlet (common in Europe, not the U.S.) in five hours. this offers a 100-mile claimed vary. The i3 ought to higher that, being lighter and additional aerodynamic.





This contrive has been prepared and envisioned by one of the Dauto CAD School student during the period of Software Training on CATIA V5.

Good News :

(OPENING AT DAuto)

DAuto Company has openings for the post of design Engineer, preference would be made for DAuto

CAD School Students, Eligible candidates may send

their Curriculum Vitae at :

[careers@dauto.co.in](mailto:careers@dauto.co.in)

(LIVE PROJECTS WITH STIPEND)

DAuto initiated to provide live projects with stipend, it will be helpful for students in their hands-on experience and future building

As well.

For More Info : 9752006008/  
9981500100



Design by Mr. Chandra Pratap  
Singh & Group on CATIA V5.

Thank You !!