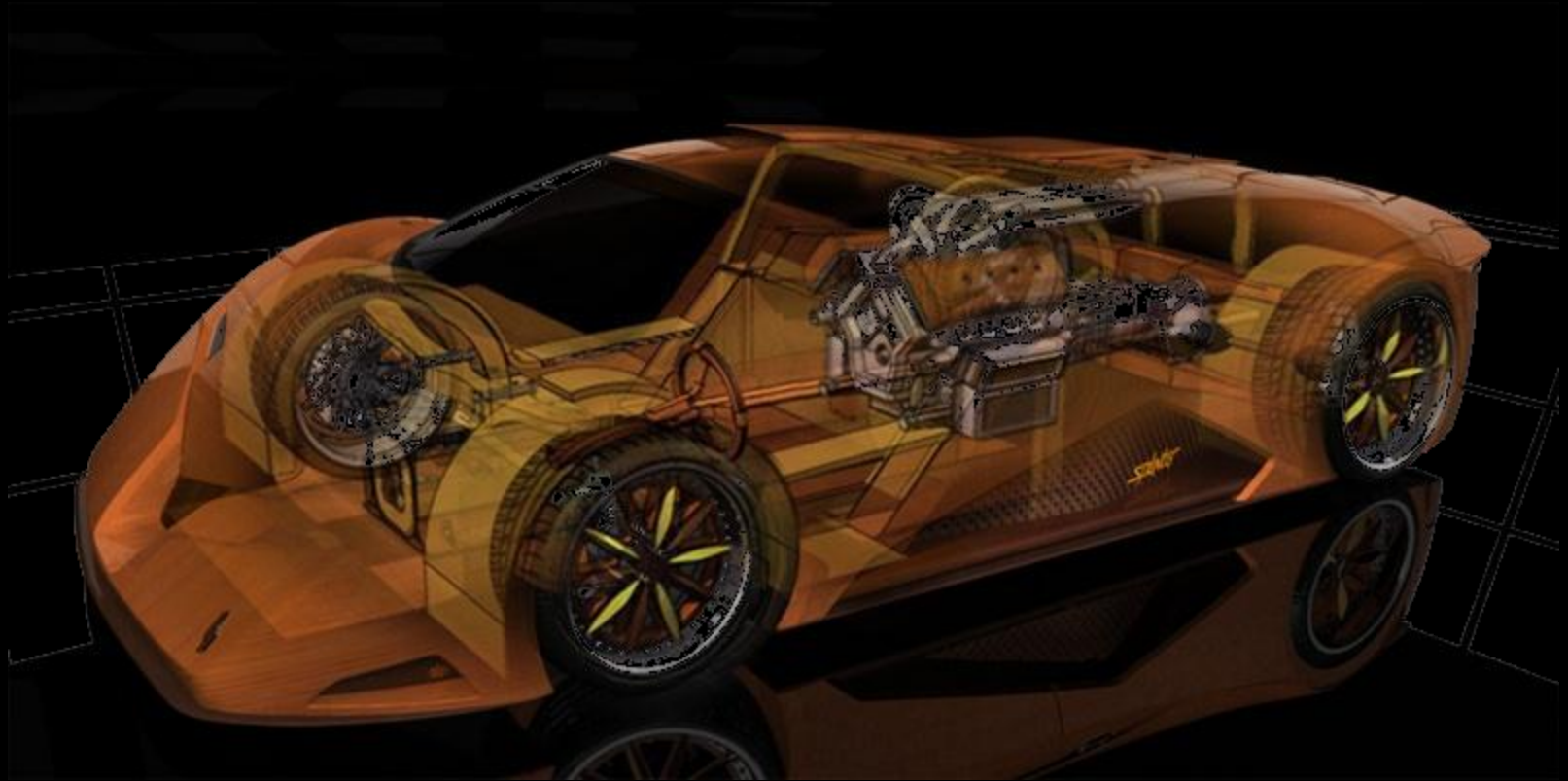


October 2012 Edition

DAuto News Letter



Design engineers turn designs into reality. Without them, a great idea but nothing more than, well, a great idea.

Lexus LF-LC Blue Concept



At the Australian International Motor Show in Sydney Lexus has presented a new version of the Lf-LC Concept, featuring a distinctive Opal Blue finish.

The original car's *burning red* exterior is replaced by an *Opal Blue* finish, inspired by the natural base color of the Australian gemstone.

Dubbed Advanced Lexus Hybrid Drive, it features a new, high-energy battery pack designed to deliver to greater power from a unit that is smaller than those used in Lexus's current full hybrid model range.

The full gasoline-electric system in the LF-LC produces a maximum 500bhp (372kW).

Lexus has announced that it "*is now actively studying how it can engineer and build a vehicle like this in the future.*"



Tronatic Everia Concept

French graphic design studio Tronatic Production has presented the Everia Concept, a project of a modern French muscle car.

The Tronatic Everia follows and evolves the French studio's previous creation, the Atmos.

The new concept showcases a more aggressive design while maintaining the styling code of the Atmos, with an exterior look characterized by the distinctive combination of materials and graphic elements.



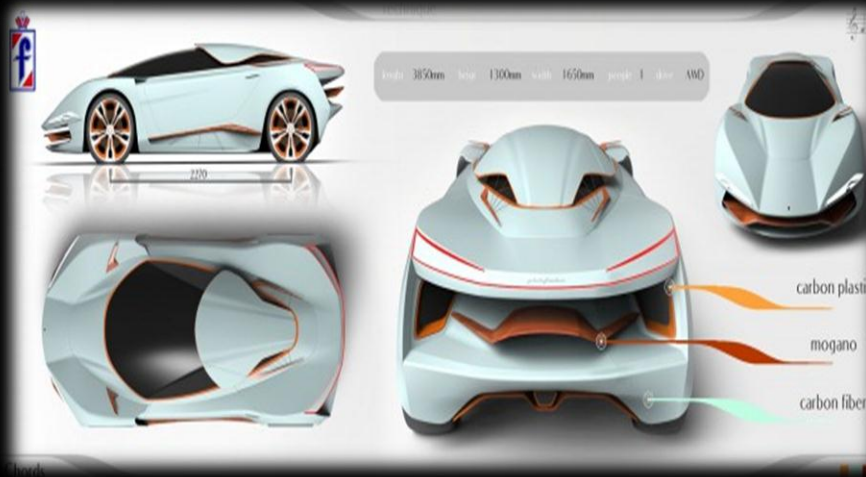
Pininfarina Chords Concept

The Pininfarina Chords Concept is a design study of a futuristic, compact sportscar inspired by the vibrations of strings in musical instruments. The author is Giampiero Sbrizzi from Turin IED.



The strings are attached to exterior elements made in mahogany, while the body panels are made of carbon fiber and composite plastics.

The concept has compact dimensions with a length of 3,850 mm, a width of 1,650 mm and a height of 1,300 mm.



The design language aims at translating into automotive forms the aesthetics and refined details of the classic musical instruments.

Ford at SEMA 2012



The Galpin team has adopted new coil-over springs, big brakes, methanol injection and a rally-ready body kit. An eye-catching paint scheme and upgraded interior finishes

An European-inspired Focus ST with increased performance, improved handling, aggressive looks and performance. Among the features are the Steeda G-Trac suspension modifications, Brembo brakes and a 19-inch custom wheel and tire package.



The exterior features a custom DuPont Beige paint job, 3dCarbon lip kit, Webasto sunroof, and LightWurkZ headlights and fog lights. The cabin has been modified by Katzkin interiors, featuring a complete sound system by Scosche Audio.



Hyundai Previews Veloster “Velocity” Concept



Among the distinctive details are the 19 x 9.0 inch, HRE lightweight satin-charcoal racing wheels, tarmac-scraping lower body kit with generous front and rear brake cooling ducts, lift-reducing rear diffuser, oversized rear wing, and #1 racecar design graphic

At the 2012 SEMA Show Hyundai will present the Veloster “Velocity” Concept, a factory-tuned version created by the company’s Technical Center in Irvine, California.

Expanding on all of the original Veloster strengths, the Velocity features a an aggressive, factory-racer design language.



Ermini Project 686: First Images

Fifty years after the closure of the company, Italian brand Ermini, in partnership with Osella, is launching a new project of a sporty barchetta which is planned for launch in 2013.



The design of the compact “barchetta” is being developed by a team at Ermini and designer Giulio Cappellini who, “not hailing from the specific automotive sector and therefore not being influenced by it, will be able to design a car using the straightforward concept of “beauty” as a springboard. The 686 will adopt a carbon fiber body and a number of advanced technologies.

MINI Paceman

At the 2012 Paris Motor Show MINI has presented the seventh model in its line-up, a compact Sports Activity Coupé based on the Concept revealed in 2011.



The main differences are in the front grille – which lacks the horizontal chromed bars and has a more complex shape due to the additional center air intake – and the more conventional tailgate design



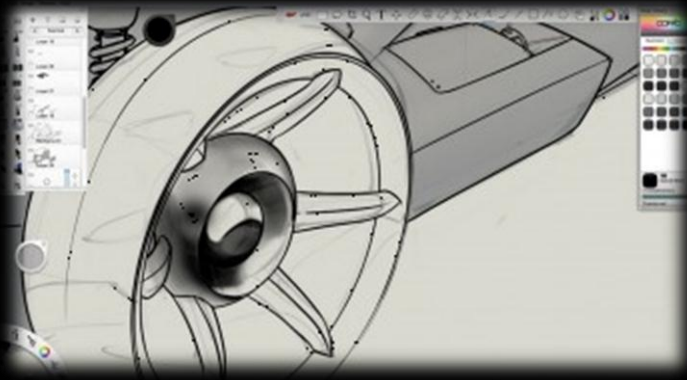
The exterior design of the new MINI Paceman is essentially the same of the homonymous concept car introduced at the 2011 Detroit Motor Show.



At the rear, the tail lights have a horizontal arrangement – a first for a MINI model – which helps in underlining the car's stance and gives the Paceman a distinctive appearance.

Autodesk Sketch Book Pro 6

This new releases introduces a number of improvements and enhancements, mainly related to the drawing workflow and the brush section, with a library with over 100 customizable presets, new brush parameters and enhanced layers palette.



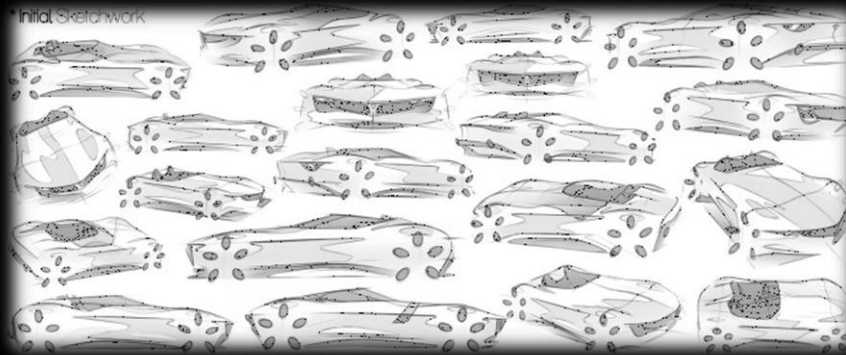
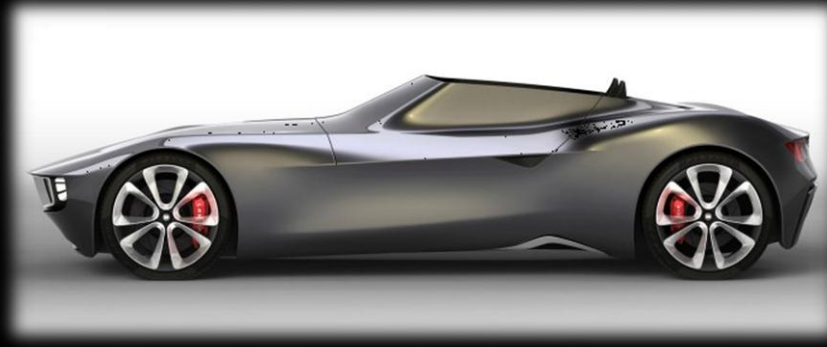
Released by Autodesk this past August, the latest version of SketchBook Pro includes new brush features, workflow enhancements and new drawing guides.



Workflow enhancements include the Color Puck tool – which allows to easily access the color wheel and to quickly vary the color luminosity and saturation; the Steady-stroke draw style and the new French Curve guides.

Lancia Bordo Concept

The Bordo is a front/mid - engined barchetta, which in proportions and design verges on being a supercar. It presents a shift away from the soft latinate curves which currently define the brand, to a harder and faster aesthetic more akin to models such as the Delta, Stratos and 037.



“The car’s overall form is quite soft and organic, with this line being the only hard-sculpted feature of the body-side. My aim was for it to be striking through its simplicity and purity – free of visual ‘clutter’ so that it can be as bold and dramatic as possible.”

Remote Explorer Design Contest: the Winners

The winner of the CGMA online design Master Class with Paul Christopher is Luke Robus, a design student from Coventry University, with his ultra large research vehicle. Vojtech Stransky and Simon Jody Lazzari placed second and third and are awarded two unplanned prizes.



The contest winner is Luke Robus, a Motorcycle design student at Coventry University, who created “The Ark” – an *Ultra.Large.Scientific.Exploration.Vehicle* (U.L.S.E.V).

Honda Previews The Civic Wagon

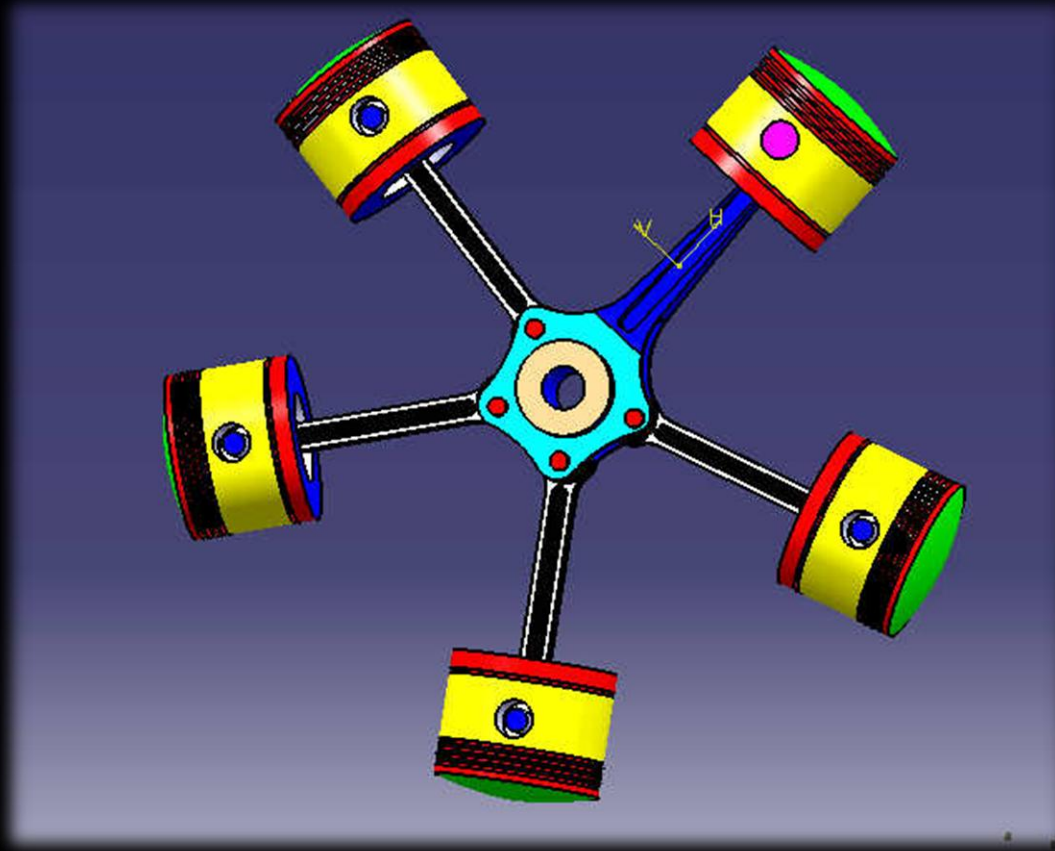


At the 2012 Paris Motor Show Honda has confirmed that a new wagon version of Honda's European Civic will be introduced in the near future. The model will be presented as a concept next year.

In addition, the Japanese carmaker has announced the Civic Type R, a sporty model developed specifically for the European market that will adopt technologies derived from Honda's participation in the World Touring Car Championships (WTCC), and will aim to become the fastest front-wheel-drive vehicle on the Nurburgring race course.

Student's Corner

News from DAuto Family



This is the RADIAL ENGINE designed in CATIA V5
It is prepared by DAuto student Mr. Chandra Sekar.

News from DAuto Family



Designed By
DAuto Student
Mayank
on
CATIA V5

Industrial Visit :
Grab the opportunity to get reserve your seat for Industrial Visit, that too free of cost.

Those who have chosen Engineering for making their career or those who are planning for, may contact. Also special visits for professional is available to get acquaintance.



For More Info : 9752006008/ 9981500100 E-mail us at: training@dauto.co.in

Thank You !!
www.dauto.co.in